

Auckland Star 6/7/1895 "Remuera Lawn Tennis and Croquet Club...."

Like · Reply · October 20 at 6:17pm

Dan Wilton replied · 2 Replies

Was the area to the right of the Tennis courts the Croquet Club?



One Tree Hill from Mt Hobson Auckland. F.G.R. 545B.

Like

Comment

A meeting of the general committee of the Remuera Lawn Tennis and Croquet Club was held at The Towers last evening.

PHLETIC SPORTS. (New Zealand Herald, 1895-11-16)

CROQUET.

The following is the annual report presented to the meeting of the members of the croquet section of the Auckland Lawn Tennis Club a few days ago:—

In presenting this, the first, annual report of the croquet section of the Auckland Lawn Tennis Club, the committee are glad to be able to congratulate the section on having had a most successful season, and on having re-established croquet as a popular game in Auckland.

The season was opened for play on the 6th of November, 1894, by Professor Segar, one of the vice-presidents, and the season closed in May, 1895, the enthusiasm in the game being maintained to the last.

At the beginning of the season, nearly all the members were quite unfamiliar with the science of the game, and owing to circumstances which could not be avoided, had a very rough lawn to play on, but they rapidly improved, and by the end of the season most of the members showed considerable skill in wielding the mallet.

During the season a competition for the gold mallet of the club was inaugurated, and this was won by Mrs. Tom Reid, after a close contest. Such trials of skill do more than anything else to improve the play, so the retiring committee recommend the introduction of further competitions during the approaching season, including handicaps, so as to give the weaker players a chance of winning. The committee are pleased to note that there is every probability of other clubs starting this season, and trust that this will result in inter-club contests, and so develop a higher standard of play. One of the most successful events of the season was the croquet picnic held on the lawn in March. Fully 100 people attended, the fashionable society of Auckland being well represented, and a most enjoyable day was spent. The guests began to assemble at eleven o'clock, and the day was occupied in playing games of croquet and tennis, with breaks for lunch and afternoon tea.

PHLETIC SPORTS. (New Zealand Herald, 1895-11-30)

LAWN TENNIS.

The lately-formed Remuera Lawn Tennis and Croquet Club is already showing signs of much vigour, it now numbers 139 members, and comprises some excellent tennis players. Last Saturday between 50 and 60 members were on the ground, and all the lawns, including the croquet lawns, were kept going. On Wednesday last the smartest play of the season on this lawn in Men's Doubles, was witnessed, between Messrs. D. Clerk and W. Ridings on the one side, and Messrs. F. and E. Dargaville on the other. A great drawback to the pleasure of players is the insufficiency of netting at the terraced end of the lawn, but I understand that this want is to be supplied in time for to-day's (Saturday's) play. There are several very promising young lady players in the Remuera Club. The lawn is pleasantly situated, and the scenery and surroundings are beautiful in the extreme. Tea and other refreshments are provided every Saturday afternoon by lady members.

> New Zealand Herald > 15 February 1905 > Page 7

CROQUET.

The members of the Remuera Croquet Club held their annual "At Home" yesterday afternoon. Invitations were issued to the Grafton, Parnell, and Mt. Eden clubs, and eight members from each club took part in the play. Ideal weather prevailed. The Remuera Croquet Club has a membership of 40 ladies, with Mesdames Payton and Caldwell vice-presidents, and Miss De Camp hon. secretary. Mesdames Kingswell, Duncan Clerk, and Frater, and Miss Goldbro' formed the committee of management for afternoon tea, etc., for the day. Miss De Camp acted as timekeeper. The tea-tables were effectively decorated with light and dark blue hydrangeas, the colours of the club. The prize in Class A. fell to Mrs. Kidd, a Mt. Eden player. In Class B, Miss Kelly and Miss Workman, having won an equal number of games, had to play off for the prize. After a very close and well-contested game, Miss Kelly won by two points. By a strange coincidence, Miss Kelly had to play off for the prize last year, but was then the loser. Mrs. Payton, in a few well-chosen words, presented the prizes—a silver-mounted bedroom clock—in each class, and hoped the prize-winners would spend many pleasant hours on the Remuera lawns in the future.

The Remuera (Mount Hobson) Bowling and Lawn Tennis Club's new green is now completed and in first class order, and will be ready for play about the middle of October. The bowling green being full size, 120 feet by 110 feet, can accommodate 60 players at one time. There are also two lawn tennis courts, 50 feet by 120 feet, perfectly formed, and no expense saved to make them second to none in the province, in addition to which there is a **croquet lawn** 50 feet by 120 feet. The pavilion now in course of erection is a two storey building, with an open space in centre, 8 feet by 15 feet, and rooms on each side, one of which is 15 feet by 12 feet, and the other 15 feet by 11 feet. Upstairs will be a large room 15 feet by 32 feet leading to a balcony 32 feet by 6 feet 6 inches, from which a good view will be obtained of the play going on on the bowling, lawn tennis and croquet lawns. The grounds are situated at the foot of Mount Hobson, within two minutes walk of the Remuera railway station, and being a freehold situated in the very centre of the Dilworth estate, it is free from buildings blocking the view of the interesting and picturesque country. The Club invite applications elsewhere for the position of caretaker.



The contractor for forming the Remuera Proper Bowling Club's green, Mr. McDonald, is pushing on his contract. The green will be the most commodious and finest in the province. It will provide accommodation for eight rinks of the maximum length, 12 feet, and as the ground is nearly square can be played from any side. The second contract will be for a croquet lawn and two lawn tennis courts. In addition to the usual pavilion there will be stabling accommodation provided for visitors. There is a beautiful spring of water on the property, which is nearly one and a-half acres in extent, and it is intended to throw the water up into a tank on a raised platform, and use the space beneath as a coffee-room. It is expected that the bowling green will be ready for play in November next. The work is being done from the designs of Mr. Jas. Stewart, C.E., who drew the plans, and is carried out under the supervision of Mr. Heron, green superintendent. There is already a strong membership which is being added to weekly, and the list of debenture-holders is also being enlarged, the property being held in debentures. A beautiful view of the surrounding country one of the loveliest landscapes in the province, is obtainable from the green, and the Remuera Proper bowlers are to be congratulated on the possession of so fine a property.



233

Remuera Croquet Club

1999

Sadly this club closed in 1995 just two years before celebrating its Centenary. It would have been the first Auckland Club to attain this status.

The Remuera Bowling Club was formed in 1895 on land in Market Rd leased from the Dilworth Trust. Two years later, the Bowling Club laid croquet lawns for wives and daughters to play. By 1905, four standard lawns had been laid and the Remuera Croquet Club continued to use these four lawns until the 1970s when one lawn was released to the Bowling Club to reduce the annual rent. The Croquet Club Pavilion was part of the Bowling Club's large building on the south side. It was cold in the late autumn and early spring.

Remuera was always a happy club. Social activities included an Annual Dinner, twilight play followed by an evening meal or Bar-b-cue. Fundraising activities included a popular Gala Day, garage sales, raffles and two day tournaments. A feature of Remuera Croquet Club was the lovely surroundings. Large pohutukawas separated the two lower lawns. The banks on the south side alongside Dilworth Junior School was planted with red canna lilies, hydrangeas, hibiscus and camellias with colourful perennials in between.

In the early 1950s there was a big increase in rent charged by the Dilworth Trust and as a result Mt. Hobson closed in 1982. The writing was on the wall for the Remuera Croquet Club when the Bowling Club decided to sell land on the Dromorne Road boundary for housing. The result of this was that the croquet lawns were required to replace the lost Bowling Club facilities and the Remuera Croquet Club ceased to exist from April 1995. Happily Epsom Croquet Club welcomed the 35 or so Remuera players who transferred to the new Epsom/Remuera Croquet Club. The amalgamation has been a great success.

MOUNT HOBSON AND REMUERA CROQUET CLUBS

Two croquet clubs existed side by side in Remuera, connected by an opening in the hedge: the Remuera Croquet Club and the Mount Hobson Croquet Club. The Mount Hobson club, formed in 1912 and accessed from Omaha Road, backed on to the Remuera club. The Auckland Croquet Association had its headquarters at the Mount Hobson club and often held large tournaments there, using Remuera's lawns to accommodate the overflow of competitors. Unable to meet a huge increase in rent charged by the Dilworth Trust, Mount Hobson closed in 1982 and the association moved to Lloyd Elsmore Park in Pakuranga.

In 1897, croquet lawns replaced the tennis lawns at the Remuera Bowling Club and the Remuera Croquet Club, made up of the wives and daughters of Remuera Bowling Club members, came into existence. They paid the bowling club greenkeeper a wage of 6 shillings per week, later increased to 15 shillings, to look after their lawns.

When the new bowling club pavilion was built in 1906, the croquet club rented a portion of it at a charge of £5 a year, 'inclusive of the use of the telephone'.⁵⁷⁶ In 1934, as the number of croquet club members had grown considerably, an extension was built for them on the south side of the bowling pavilion, and the rent raised to £60 a year.

High membership continued until the late 1960s, when a dramatic decline forced the club to return one lawn to the bowling club, in an attempt to reduce the rent. However, by the mid-1970s, following a concerted drive for new players, numbers rose to 73 with a waiting list — making Remuera one of the largest croquet clubs in the Auckland district.

In 1995 the bowling club, having sold some of its land, needed the croquet lawns so terminated the croquet club's lease. The 45 Remuera members joined with their Epsom counterparts in creating the new Epsom-Remuera club. This, situated in Gillies Avenue, today has a growing membership and an active programme of social croquet, tournaments and coaching.

When the new bowling club pavilion was built in 1906, the croquet club rented a portion of it at a charge of £5 a year, 'inclusive of the use of the telephone'.

CROQUET.

THE REMUERA CLUB.

There was a good attendance of members at the annual meeting of the Remuera Croquet Club held in the pavilion, Market Road.

The report stated that the past season had been very satisfactory and the finances of the club were in a good position. Extra expense had been entailed in laying out the new green the club had succeeded in obtaining. Members would have the privilege of playing on four full-sized lawns this coming season.

The following officers were elected:—President, Mrs. W. W. Bruce; vice-presidents, Mesdames W. Kenderdine, J. Wooller; executive, Mesdames Burnett, Eastgate, Mahoney, Peacocke, Priestley, Miss Skeet; match committee, Mesdames Burnett, Peacocke, Hamlin-White, Misses Skeet, Sloman; ground committee, Mesdames Burnett, Kenderdine, Mahoney, Wooller; hon. secretary and treasurer, Mrs. A. Davis; hon. auditor, Mr. W. W. Bruce (re-elected).

The season will open on October 13.



Photo. by Lafaget

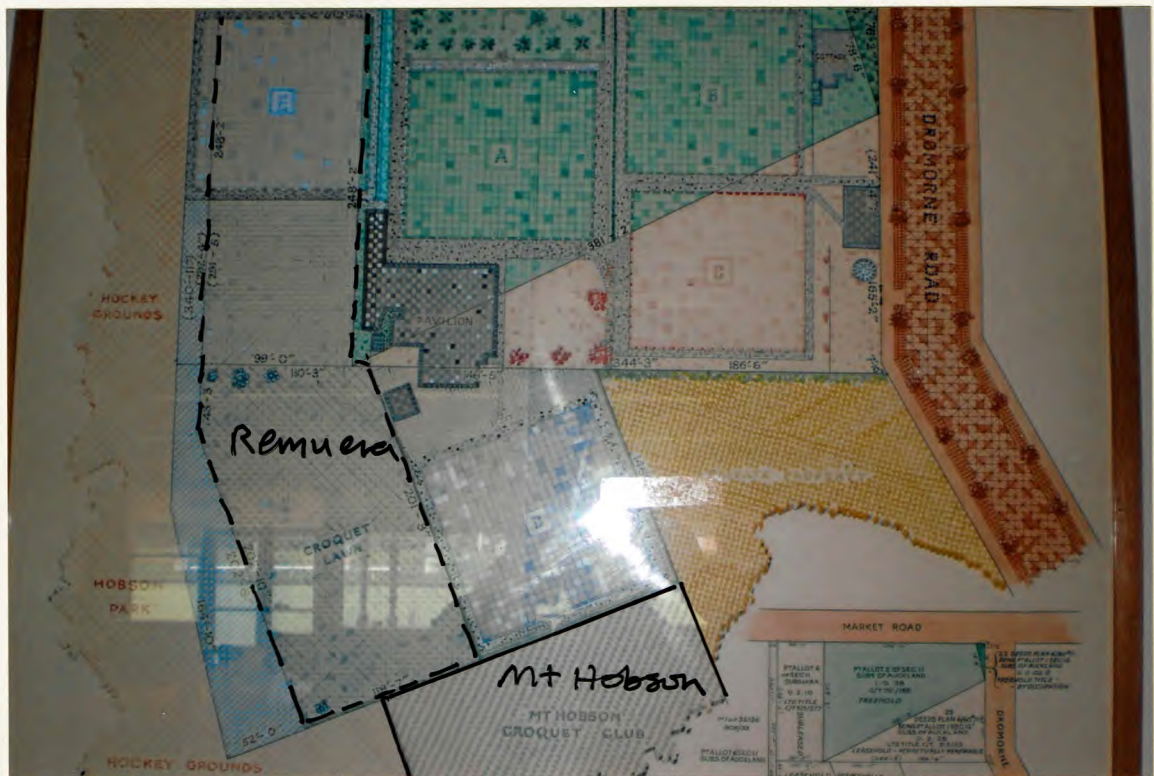
The Remuera Bowling and Croquet Club's lawns and fine pavilion.

"Ladies Mirror" 1 May 1924

Auckland Star > 16 April 1934



A SUCCESSFUL YEAR.—Members of the Remuera Croquet Club who this year secured the Auckland A.A. championship inter-club shield. From left: Mesdames Brabant, Lowe, Miss Skeet, Mesdames Bruce, Daniels, Ellison, Bray, Coutts, Burrett, Broad.





1950 Remuera Bowling Club.

The lawns behind (green) are the Mt Hobson Croquet Club

The Remuera Croquet Club lawns were west of the clubhouse - a glimpse of one lawn can be seen behind the Club House.

Remuera Croquet Club
Closed 1995



Looking SW towards Dilworth Junior School



Looking NW towards Mt Hobson



This map/plan is illustrative only and all information should be independently verified on site before taking any action. Copyright Auckland Council. Boundary information from LINZ (Crown Copyright Reserved). Whilst due care has been taken, Auckland Council gives no warranty as to the accuracy and completeness of any information on this map/plan and accepts no liability for any error, omission or use of the information. Height datum: Auckland 1946.

Remuera & Mt Hobson CCs 1959

Created: Sunday, 23 November 2014, 11:13:19 a.m.



Auckland Council
Te Kaitiaki o Te Kaitiaki

Scale @ A4 1:1000



Early 1980's
See hole in
the hedge
giving access
to Mt Hobson
Croquet Club,
whose main
entrance was
off Omaha Rd



Remuera
Bowling Club
2010 - a
similar view
to the photo
above

Below

A view of the Remuera Bowling Club in 1950 with the Mount Hobson Croquet Club in the far left corner. The Remuera Croquet Club is behind the clubhouse, and to the right is Hobson Park.



c 1973 Mayor Robbie running the first hoop of the Season at the Remuera Croquet Club
Vera Beetson (mother of Bob) second from left

Order to quit bowls over croquet club

By GREG DIXON

An Auckland croquet club being turfed off its playing lawns may be forced to disband after almost a century in existence.

The Remuera Croquet Club has been told it must leave its grounds after 97 years of leasing the Market Rd site from its owners, the Remuera Bowling Club.

The decision has left the 77 members of the croquet club homeless from next April — and they face the possibility of being the last players for the long-standing club.

As the club captain, Fay Heeps, yesterday watched the play during the last Auckland regional tournament to be held at the club, she said she was deeply saddened by the loss of the two lawns.

"I think, like a lot of people, I retired from working life and I had to fill that gap with something," she said.

"So when I joined croquet I made a lot of friends and had the challenge of playing them, and it felt as though I had filled that gap.

"But whatever happens now, we will not move en masse — people will probably splinter.

"I feel very, very sad about it. Even the visitors from clubs around Auckland have said the same thing.

"We are all very disappointed. We like it here and we had hoped to go on playing here for many years to come."

The club's president, Billie McKane, said yesterday that the bowling club had advised her club last April that it could no longer use the lawns it had played on since 1897.

She said the bowling club had applied

to have the site rezoned by the Auckland City Council so that it could sell part of it and develop a carpark and international-standard, all-weather bowling green.

The decision had come "like a bolt from the blue" in the middle of a \$4000 upgrade of one of the club's croquet lawns.

She said the 12 months' notice given by the bowling club had not been enough time for her club to make alternative arrangements.

After the failure of negotiations with the Auckland City Council to find another site, the croquet club's prospects now looked bleak.

Billie McKane said that although relocation was still an option, it was likely that the club would have to amalgamate with another club — or disband.

"We feel it's been a fairly cavalier attitude [from the bowling club].

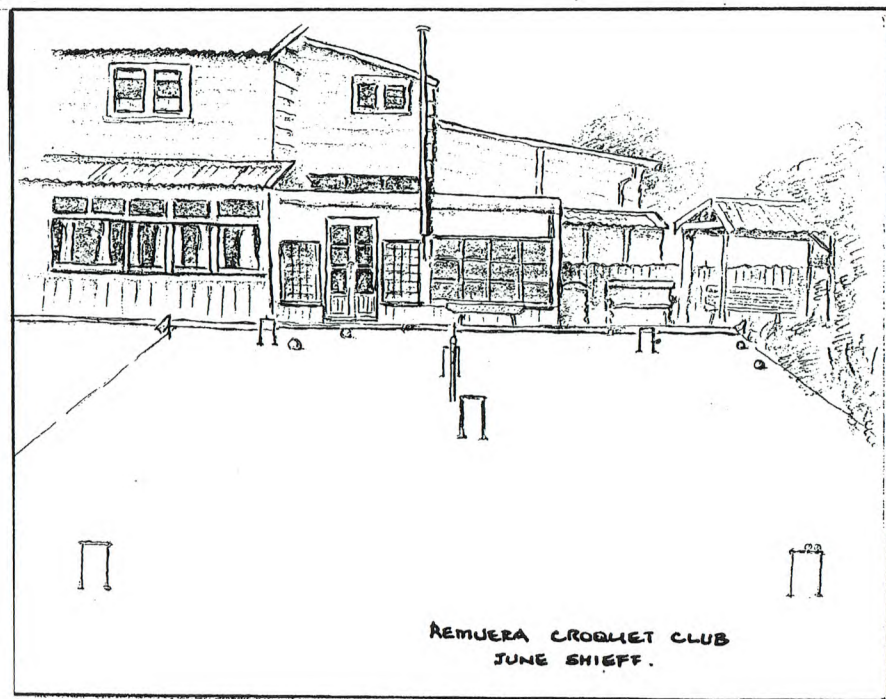
"I feel we have been a pushover, and I feel perhaps because of the nature of the club, mainly retired women, that we really have not perhaps had all that we might have had."

A spokesman for the bowling club, Mr John Milne, said yesterday that the decision to ask the croquet club to leave had been made after a "great deal of soul searching."

The bowling club had given the croquet club 12 months' notice and waived the usual annual rent of just under \$4000.

"We have attempted to negotiate with them and be as helpful as we can.

"We are not sacrificing the croquet club; we are trying to improve the facilities that 363 [bowling] club members enjoy — not 63."



*'What could possibly be more enchanting,
On a sparkling summer morn,
Than to step out upon the crystal dew
Of an emerald croquet lawn.'*

ISBN 0-473-03153-1

Published in 1995 by
Remuera Croquet Club,
6, Market Road Remuera, Auckland

Printed by
Takatimu Print, Auckland
All rights reserved.

FOREWORD



After almost 100 years it is impossible to record in detail the history and highlights of the Remuera Croquet Club.

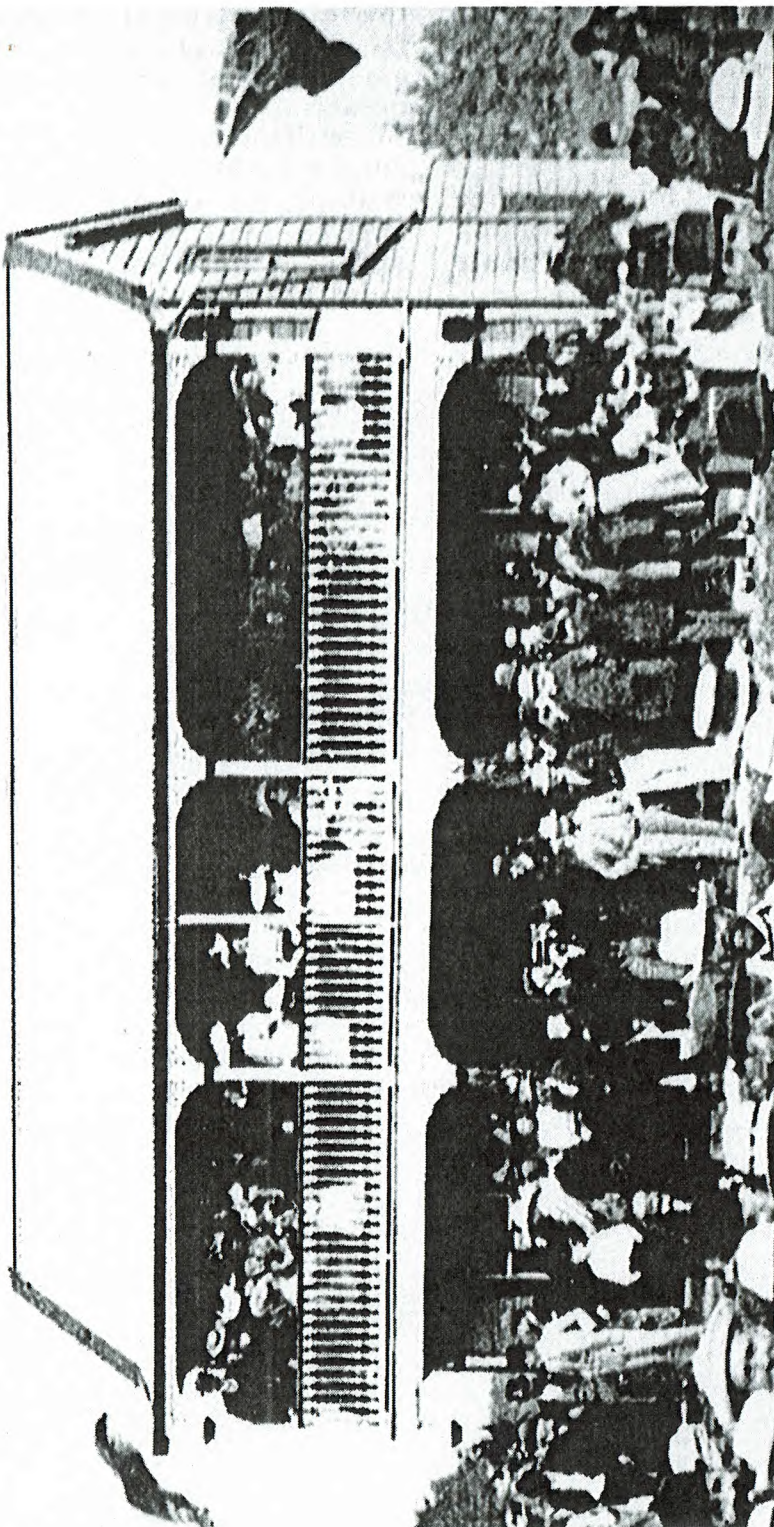
In recording the names of past Presidents, Club Captains and Champions, we acknowledge those members who have been highly visible in their time. However, this booklet is really a tribute to all those unnamed members who have worked unheralded over the years - committee members, referees, umpires, coaches, groundspeople, fund raisers, housekeepers and in fact to everyone who has contributed in some way to the club's success.

Although this booklet is a very brief record, we hope it will remind past and present members of their happy association with the club and serve as an incentive to keep the name of "Remuera Croquet Club" alive and well.

Billie McKane.

April 1995

Billie McKane
PRESIDENT



1ST ANNIVERSARY OPENING DAY OF THE REMUERA BOWLING CLUB.
30TH OCTOBER 1896. (N.Z. Graphic).
(ONE YEAR BEFORE THE REMUERA CROQUET CLUB WAS FOUNDED.)

EARLY DAYS



The Remuera Croquet Club came into existence in 1897. Lawns were laid down on Market Road by the Remuera Bowling Club which had been formed two years previously on land leased from the Dilworth Trust. The site was just south of where the caretaker's house now stands.

So, while waiting to make tea for the Bowling Club players, wives and daughters were kept pleasantly and handily occupied.

By 1898 as the lawns were not being used much, they were leased to a tennis club for £10 p.a. However, in 1900 there was once more a need for croquet, and the wives and families of Bowling Club members were granted the use of the two tennis courts free *"provided they formed a club for tennis or croquet or both"*. The Ladies' Committee was, however, *"to be responsible for children not to come within the precincts of the bowling greens"*.

The tennis players found land elsewhere in 1902 and so the lawns were, for the next four years, used solely for croquet.

The Bowling Club greenkeeper was responsible for their upkeep and for this service the ladies paid him a wage of 6/- per week which was later increased to 15/-

due to the extra work incurred as the lawns were in use every day.

Both croquet and bowls then enjoyed a rise in popularity and by 1905 it became necessary for the Bowling Club to lease further land from the Dilworth Trust. This land, which was to the south, had previously been part of a polo ground and was sufficient for four standard lawns, running back at right angles from Market Road. A 99 year lease was arranged with a ground rent of £8 p.a. This arrangement continued, with adjustments, until the Bowling Club bought the freehold from Dilworth Trust in the mid-1980s.

As the Dilworth Trust was forming several new roads in the vicinity in 1905, surplus soil was available to be used in laying down the new lawns.

At this time the Bowling Club's new pavilion was built at a cost of £885, a portion of which was set aside for the Croquet Club at a charge of £5 p.a. *"inclusive of the use of the telephone"*.

It seems that such was the popularity of croquet that the club was actually allowed to use some bowling greens when pressed for space on special occasions.

In 1918 a deputation to the Croquet Club committee from the Bowling Club suggested that the Croquet Club should have their own greenkeeper. This was vehemently refused by the Croquet Club -

"They would not consider the idea of severing themselves from the pleasant associations which had always existed between the Gentlemen of the Bowling



MRS. M. I. CLARK (FORMERLY MRS. J. S. KEYS)
DAUGHTER-IN-LAW OF MRS. L. J. KEYS
PRESIDENT 1966-1971



MRS. L. J. KEYS.
PRESIDENT 1946-47. CHAMPION - 1933-36-37-38-41.

Club and the Ladies of the Croquet Lawn and to do what was suggested was the first step towards that severance."

THROUGH CHANGING TIMES



The Remuera Croquet Club became an incorporated Society in 1928.

In the early days of the slump in 1931, the Croquet Club requested that their rent be reduced by £15 because of straitened circumstances.

In 1934, to provide further accommodation, an extension was built to the south side of the pavilion for £106. Rent was raised to £60 p.a.

Later, when the Bowling Club required office space, a piece of the Croquet Club's clubroom was taken. Later a further extension was built onto the clubroom to compensate.

In 1948 a club badge was designed and a die made.

At one time the Mount Hobson Croquet Club, which was in Omaha Road, was connected to the Remuera Croquet Club by an opening in the hedge. Their club was the headquarters for the Auckland Croquet Association and, when they held one of their many large tournaments, the overflow of competitors would come through and use Remuera's lawns.



PAST CLUB CAPTAINS.

Joy Carter	Zoe Hayward	Joan Monro	June Shieff	Doreen Rhodes
1978/79/90	1981/82/92	1988/89	1991	1986/87



PAST PRESIDENTS.

Bernice Cooke.	Dorothy Holmwood.	Joy Carter.	Cath Harris.
1981/82	1989/90	1983/84	1985/86
Jean Campbell.	Zoe Hayward	Absent - Ona Redpath	
1991/92	1979/80	1987/88	

One lady, who lived nearby, mistakenly joined the Mount Hobson Croquet Club, thinking it was the Remuera Croquet Club. She remained there until 1982, when, sadly, the club had to close due to the big increase in rent charged by the Dilworth Trust. She and some others then came through 'the hole in the hedge'.

The early 1970s were membership doldrum years and the lawn adjacent to Market Road reverted to the Bowling Club to reduce fees. Some bowler husbands were even roped in as "*honoraries*" to boost coffers.

However, following a concerted drive for new players, by 1973 the roll had closed at 73 with a waiting list.

HAPPY TIMES



There were happy times over the years in the combined social life of the two clubs. For instance, card days were held in the Bowling Club cafeteria on every second Monday during the winter.

The President and the Secretary of the Bowling Club and their wives would always attend Opening Day and, in their time, so did Mayor Robbie, Dr. McElroy and Alan Hight.

To pass the time whilst their husbands were playing in bowling tournaments, visiting wives would often join in the croquet.



EXECUTIVE COMMITTEE - 1994-95

*Back Row: Pat Ellis (Vice President) Marie McKechnie (Grounds Superintendent)
Audrey Coe (Treasurer) Patsy Anning
Front Row: Wilma Willis (Secretary) Fay Heeps (Club Captain) Billie McKane (President)
Faye Cohen (Vice President) Rose Benjamin. Absent- Aline Daves & Wyn Bolam.*



OPENING DAY - 1994

In the days when time was to be had aplenty - before there were working wives - the main social function of the year was the dinner. Tables were covered with lace tableclothes and decorated with silver candle-sticks and posy bowls. Legend has it that there was a hand-embroidered club flag which was run up the pole on these occasions.

The annual Gala Day was the main fund-raising event, when members produced delectable and attractive items for sale. A popular tournament replaced it a few years ago, and garage sales have been held, along with the ubiquitous trading table and raffle.

Barbecues have added a modern touch to the social calendar, and also an evening meal, preceded by twilight play, has been a pleasant fixture for some years.

MANY HANDS....



Lawn watering in the summer months was always a time-consuming task until the ingenious water-tractors were introduced. Lately a young man has been employed to put them out, keeping the lawns in top condition.

Much time and care was dedicated to planting and maintaining the extensive garden banks. The masses of red cannas, old blue hydrangea, hibiscus and camellia bushes, also native trees and shrubs with colourful



*OH DEAR !! ITS RAINING.....
MEMBERS IN THE CLUBHOUSE*



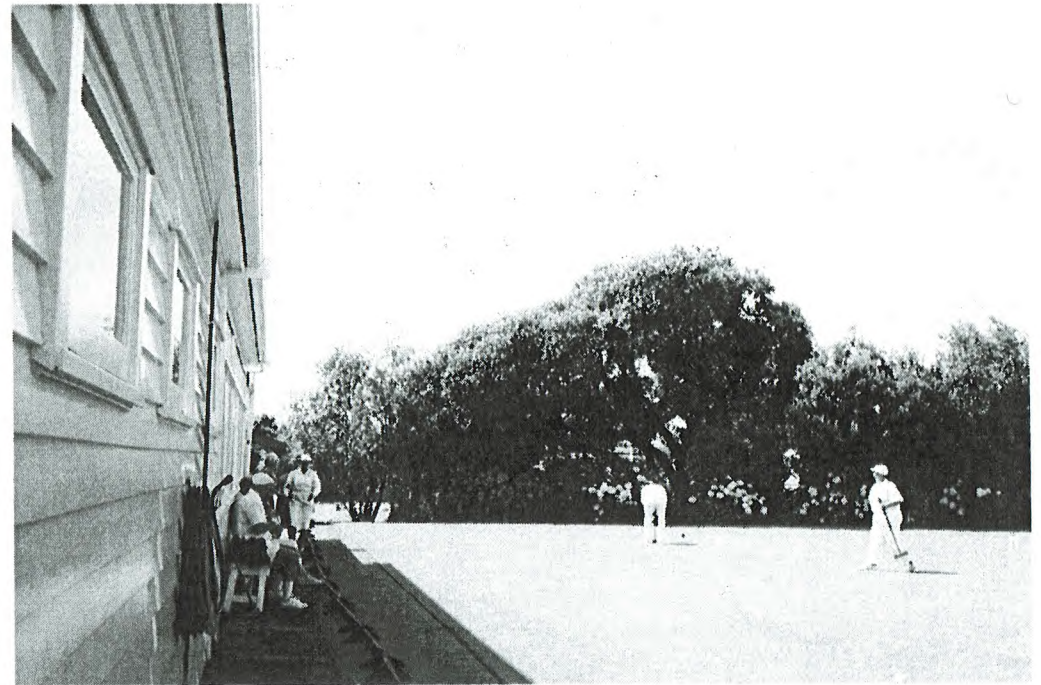
ROSE BENJAMIN - BARBECUE CHEF EXTRAORDINAIRE .

perennials in between were all given by members and provided a glorious and tranquil setting.

Working bees were frequently organised to cope with pruning and weeding. These were attended by many members who had a lot of fun and helped to create a great sense of camaraderie in the club. A kindly husband with a trailer was inveigled into disposing of the debris (accessing via a hole in the fence through Hobson Park).

This fence (or lack of it) was a bone of contention for some years since it had fallen into disrepair and had not been replaced. High velocity missiles from enthusiastic hockey players next door were a constant threat to the serenity and indeed the wellbeing of folk in pursuit of a more peaceful pastime. In time, some secondhand iron fencing from a benefactor was erected and peace was restored.

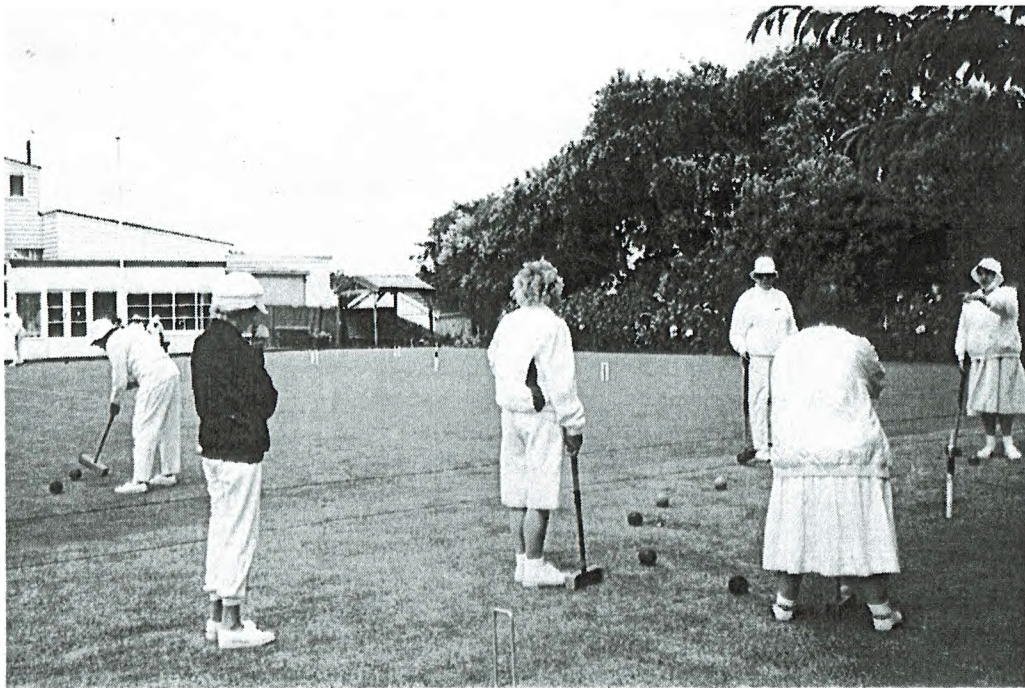
Recently this fence also was removed when Dilworth Junior School was built next door and the flat area conveniently extended to the size of a bowling green. Unfortunately, this destroyed the gentle floral bank, leaving in its place a much steeper slope which was replanted by the Bowling Club with ground cover.



TOP LAWN & CLUBHOUSE LOOKING EAST



*BOTTOM LAWNS LOOKING EAST -
DILWORTH SCHOOL ON RIGHT*



'NEW TO CROQUET' COACHING - 1992

THE GAME



The wearing of white was always rigorously enforced. However, in the early 90s a blue cardigan with club monogram was introduced and has proved very popular.

Until the advent of trousers for the feminine gender, lady croquet players adopted the elegant side stance as centre stance was frowned upon as unladylike!

At first it was the practice for all juniors to play on half-size lawns. In the 70s, when senior membership was fairly small, it was not unusual to find just three or four players on a standard lawn, while on the small lawns junior players were tripping over one another. However, in 1977 a more equitable double banking arrangement was agreed upon and Remuera lost a few of its disgruntled senior members who objected to sharing 'their' lawns with mere juniors.

Many Remuera players have been involved in Interclub organised by the Auckland Croquet Association. This has given them an insight into the standard of play at other clubs and has improved their game..

Records show that few men have joined the club over the years. One who did, apparently bought a book on "*How to Play Croquet*", practised alone in the early mornings and finally resigned saying that "*Now I have learned to play the game I'll move on to a new challenge*".



CHRISTMAS PARTY - 1992

Another good keen man kindly took away some hoops for galvanising. Neither he nor the hoops were ever seen again.

Yet another, who was also a member of the Remuera Bowling Club, was quoted as saying *"I play croquet in the week for stimulation and bowls at the week-end for relaxation"*.

Croquet has always found applicants for whom the fairways have been getting longer and the hills steeper or the asphalt courts increasingly unyielding to the joints, but younger people too, like them, have come for the exciting tactical challenge of the game.

The coaches always told us - *"Just remember the initials of the Remuera Croquet Club - Roquet, Croquet and Continuation."*

The motto instilled into new players being introduced to the mysteries of the game by long-suffering coaches was *'Stalk, Stance and Swing'*.

Once the basic strokes were mastered the very best way to learn was to be included in a game with more experienced players, with the warning *"It takes three years to get the hang of it you know"*.

Oh the misses, the mortifications, but at last - light at the end of the tunnel. (How can you possibly compete against your new friends...?) A win! The 'Molly Hendl' is yours - the world is your oyster - but is it? Halved angles, split rolls, pass rolls, rushes and breaks - Horror! A crush! A cannon! A never-ending learning curve.

THE FUTURE



Our stay at the present location will be terminated at the end of April 1995. Strenuous efforts made by the Executive to find an alternative site have been unsuccessful.

However, Epsom Croquet Club has been able to lease an adjoining piece of Council land in Melville Park. This has enabled us to accept their invitation to amalgamate our clubs to be known as the Epsom/Remuera Croquet Club Incorporated.

Thus, the oldest croquet club in Auckland will begin a new era and Remuera players will continue their contribution to the Auckland croquet scene.



PLAYERS ON BOTTOM LAWNS WITH CLUBHOUSE & MT.HOBSON BEHIND.

PRESIDENTS	'A' CHAMPIONS	INTERMEDIATE CHAMPIONS	'B' CHAMPIONS	'C' CHAMPIONS
1928 Mrs W. Bruce	Miss R. Skeet			
1929 Mrs H. Burnett	Mrs W. Bruce			
1930 Mrs J. Woolner	Mrs W. Bruce			
1931 Mrs P. Mahoney	Miss R. Skeet			
1932 Mrs R. Lush	Miss R. Skeet			
1933 Mrs E. Daniels	Mrs. L.J. Keys			
1934 Mrs E. Daniels	Mrs J.W. Lowe			
1935 Mrs C. Webber	Mrs G.W. Burrett			
1936 Mrs C. Webber	Mrs. L.J. Keys			
1937 Mrs J. Jarvie	Mrs. L.J. Keys			
1938 Mrs J. Jarvie	Mrs. L.J. Keys	Mrs. J.S.Watts	Mrs. J. Henrys	
1939 Mrs J.P.O'Connor	Miss R. Skeet	Mrs.E. Hodge	Mrs.B.Bassett	
1940 Mrs J.P.O'Connor	Mrs R.I. Allan	Mrs. E. Henrys	Mrs.T.G.Short	
1941 Mrs T.G. Short	Mrs. L.J. Keys	Mrs. E. Henrys	Mrs.A.M.Butts	
1942 Mrs T.G. Short	Mrs. E. Henrys	Mrs.E.J.Nolley	Mrs.H.J.Ironside	
1943 Mrs J.W. Lowe	Mrs E. Rotherham	Mrs.H.J.Ironside	-----	
1944 Mrs G.B.Bartlett	Mrs J.P.O'Connor	Mrs.T.G.Short	Mrs.A.M.Butts	
1945 Mrs G.B.Bartlett	Mrs G.B.Bartlett	Mrs.R.McCullough	Mrs.R.A.Ryalls	
1946 Mrs. L.J. Keys	Mrs R.I. Allan	Mrs.H.Baston	Mrs.J.Black	
1947 Mrs. L.J. Keys	Mrs H. Manuel	Mrs.H.Baston	Mrs.F.Gill	
1948 Mrs B. Bassett	Mrs H. Manuel	Mrs.R.Mcharry	Mrs.N.Proctor	
1949 Mrs.C.G.Isbister	Mrs. H. Manuel	Mrs.R.L.Bartlett	Mrs.S.Palmer	Mrs.B.Bollard
1950 Mrs.H.J.Ironside	Mrs. L.Stewart	Mrs.R.Mcharry	Mrs.F.A.Gerrard	Mrs.B.Ireland
1951 Mrs. O.E. Bartlett	Mrs. L.Stewart	Mrs.A.Murdoch	Mrs.W.Kearns	Mrs.A.Langmuir
1952 Mrs. L.A.Mullins	Mrs. L.Stewart	Mrs.M.L. Little	Mrs.J.F.Potter	Mrs.J.Brisbane
1953 Mrs.L.A.Mullins	Mrs.E.D.Henrys	Mrs.F.Palmer	Mrs.A.Langmuir	Mrs.M.Reynolds
1954 Mrs. M.Little	Mrs.L.A.Thompson	Mrs.J.Black	Mrs.S.Vincent	Mrs.D. Cook
1955 Mrs.H.Baston	Mrs.L.A.Thompson	Mrs.J. Black	Mrs. A. Parr	Mrs. D. Cook
1956 Mrs.H.Baston	Mrs.D.J.O'Neil	Mrs. I.Parr	Mrs.R.Reynolds	Mrs.J.Wearn
1957 Mrs.L.A.Thompson	Mrs.L.Stewart	Mrs.A.Langmuir	Mrs.J. Wearn	Mrs. T. Lornie
1958 Mrs.J.Black	Mrs.D.Molloy	Mrs.R.Reynolds	Mrs.J.Ingley	Mr.F.W.Cole
1959 Mrs.J.Black	Mrs.D.Molloy	Mrs.J. Buckrell	Mrs.J. Preston	Mrs. G. Heal
1960 Mrs.H.M.Bartlett	Mrs.H.M.Bartlett	Mrs.J. Wearn	Mr.F.W. Cole	Mrs.E.G.Fuller
1961 Mrs.I. Parr	Mrs.H.M.Bartlett	Mr.F.W. Cole	Mrs. J. Farrell	Mrs. J. Clark
1962 Mrs.I. Parr	Mrs. I. Parr	Mrs. F. Cole	Mr.H.H.Parrant	Mrs.N.A.Beetson
1963 Mrs. J. Farrell	Mrs. I. Parr	Mrs.N. Martin	-----	Mrs. J.S. Keys
1964 Mrs.E.E.Earnshaw	Mrs.W.T.Stranton	-----	Mr. S. Garland	-----
1965 Mrs.E.E.Earnshaw	Mrs.E.E.Earnshaw	-----	Mr. S. Garland	-----
1966 Mrs. J.S. Keys	Mrs.U.M.Creighton	-----	Mrs.N.A.Beetson	-----
1967 Mrs. J.S. Keys	Mr.A.D.M.Rose	---	Mrs. J.S. Keys	Mr.J.C. Clark
1968 Mrs. J.S. Keys	Mr.A.D.M. Rose	Mr. S. Garland	Mrs. J.S. Keys	Mr.J.C. Clark
1969 Mrs. J.S. Keys	Mrs.R.L.Bartlett	-----	-----	Mr. K. Cleland
1970 Mrs. J.S. Keys	Mrs. E. Cole	Mrs. J.S. Keys	-----	Mr. K. Cleland
1971 Mrs. J.S. Keys	Mr. L. Ford	Mrs. J.S. Keys	Mr.K. Cleland	-----

PRESIDENTS	'A' CHAMPIONS	INTERMEDIATE CHAMPIONS	'B' CHAMPIONS	'C' CHAMPIONS
1972 Mrs.W.T.Stanton	Mr. L. Ford	Mrs. N. Beetson	Mr. G. Clark	Mrs. J. Watson
1973 Mrs.A.M.Gray	Mr.R.Jackson	Mrs. N. Beetson	Mrs. J. Watson	Mrs. E. Kelsall
1974 Mrs.A.M.Gray	Mrs. E.Cole	Mrs. J.M. Watson	Miss M.G.Mitchell	Mrs. M. Roman
1975 Mrs.M.Gaudin	Mrs. J.S. Keys	-----	Mrs.A. Sorenson	Mrs. Z. Hayward
1976 Mrs.M. Gaudin	Mrs.J.M. Watson	-----	Mrs. E. Kelsall	Mrs. N. Murray
1977 Mrs.S. Bailey	Mrs.E.Kelsall	-----	Mrs. N. Murray	Miss J. Carter
1978 Mrs.B.Commons	---	Mrs M.J.Murray	Mrs.Z.Hayward	Miss J..Carter
1979 Mrs.Z.Hayward	Mrs.J.Murray	Mrs. B.Commons	Mrs.Z. Hayward	Mrs. P. Batten
1980 Mrs.Z.Hayward	Mrs.J.Murray	Mrs. Z. Hayward	Mrs.O.DeMalmach	Mrs. D. Rhodes
1981 Mrs.B.Cooke	Mrs.J.Murray	Mrs. Z. Hayward	Mrs. D. Rhodes	Miss L. Insley
1982 Mrs.B.Cooke	-----	-----	Mrs. D. Rhodes	Mrs. T. Radley
1983 Miss J Carter	-----	Mrs. S.H.Bailey	Mrs. D. Rhodes	Mrs.M.Thurston
1984 Miss J.Carter	-----	-----	Miss L. Insley	Mrs.M.M.Purcell
1985 Mrs. C. Harris	-----	Mrs.D. Rhodes	Mrs. B. Cooke	Mrs.J.Rosenfeldt
1986 Mrs. C. Harris	-----	Mrs. D. Rhodes	Mrs.R. Johnson	Mrs. R. Melbye
1987 Miss O.Redpath	-----	-----	Mrs.J.Rosenfeldt	Mrs. J. Monro
1988 Miss O.Redpath	-----	Miss J. Carter	Mrs.J.Rosenfeldt	MissJ.Campbell
1989 Mrs.D.Holmwood	-----	Mrs. D. Rhodes	Miss J.Campbell	Mrs. F., Heeps
1990 Mrs.D.Holmwood	-----	Mrs.D. Rhodes	Mrs. E. Hanna	Mrs. F. Heeps
1991 Miss J.Campbell	-----	Mrs. D. Rhodes	Miss J. Marbeck	Mr. A. Kincaid
1992 Miss J.Campbell	-----	Mrs. D. Rhodes	Mrs. K.Emanuel	Mrs. A. Dawes
1993 Mrs. B.McKane	-----	Miss J. Marbeck	Mrs. K. Emanuel	Mrs. D.C.Gavin
1994/ 95 Mrs.B. McKane		Miss J. Marbeck	Mrs. J. Shieff	Mrs. P. Ellis
1995		Miss J. Marbeck	Mrs. P. Anning	Mrs. K. Hagen

CAPTAINS

1961 Mrs. H. Parrant	1978 Miss. J. Carter
1962 Mrs. H. Bartlett	1979 Miss. J. Carter
1963 Mrs. H. Parrant	1980 Miss. J. Carter
1964 Mrs. H. Parrant	1981 Mrs. Z. Hayward
1965 Mrs. H. Parrant	1982 Mrs. Z. Hayward
1966 Mrs. H. Parrant	1983 Mrs. T. Radley
1967 Mrs. H. Bartlett	1984 Mrs. T. Radley
1968 Mrs. H. Parrant	1985 Miss. L. Insley
1969 Mrs. H. Parrant	1986 Mrs. D. Rhodes
1970 Mrs. H. Baston	1987 Mrs. D. Rhodes
1971 Mrs. N.A. Beetson	1988 Mrs. J. Monro
1972 Miss. B. Mitchell	1989 Mrs. J. Monro
1973 Miss B. Mitchell	1990 Miss J. Carter
1974 Mrs. B. Commons	1991 Mrs. J. Shieff
1975 Mrs. B. Commons	1992 Mrs. Z. Hayward
1976 Mrs. N. Murray	1993 Mrs. F. Heeps
1977 Mrs. N. Murray	1994 Mrs. F. Heeps

AUTOGRAPHS

CURRENT MEMBERS

Mrs. P. Anning	Mrs. F. Cohen	Mrs. E. Hanna	Mrs. M. McKechnie	Mrs. I. Prior
Mrs. J. Beagle	Mrs. J. Cormack	Miss E. Harvey	Miss J. Marbeck	Miss O. Redpath
Mrs. R. Benjamin	Mrs. M. Davidson	Mrs. J. Harvey	Mrs. R. Melbye	Mrs. D. Rhodes
Mrs. W. Bolam	Mrs. A. Dawes	Mrs. Z. Hayward	Mrs. M. Mills	Mrs. J. Rosenfeldt
Mrs. D. Burcher	Mrs. N. De Jaunay	Mrs. F. Heeps	Mrs. J. Monro	Mrs. R. Roskruge
Mrs. D.C. Gavin	Mrs. P. Ellis	Mrs. O. Ingham	Mrs. P. Moss	Mrs. J. Shieff
Miss J. Campbell	Mrs. K. Emanuel	Mrs. R. Johnson	Mrs. J. Muggeridge	Mrs. B. Simms
Miss J. Carter	Miss P. Fitzgerald	Mrs. J. Lees	Mrs. G. Neill	Mrs. M. Thurston
Mrs. D. Chiu	Mrs. W. Furness	Dr. M. McDougall	Mrs. J. Newcomb	Mrs. J. Timmins
Miss A. Coe	Mrs. K. Hagen	Mrs. B. McKane	Mrs. N. Orr	Mrs. W. Willis

HONORARY MEMBERS

Miss M. Beckett	Mrs. B.J. Cooke	Mrs. M. Mackesy
Mrs. V. Benton	Mrs. M. Gapes	Miss L. Pope
Mrs. R. Brown	Miss P. Gatfield	Mrs. T.E. Radley
Mrs. P.B. Clark	Mrs. J. Griffin	Miss P. Thomas
Mrs. M. Coldham	Mr. S. Hanna	Mr. R. White
Mrs. B. Commons	Mrs. C.E. Harris	

LIFE MEMBERS

Mrs. M.I. Clark
Mrs. E.E. Cole

AUTOGRAPHS



THE ANNUAL AUCKLAND CROQUET CHAMPIONSHIP TOURNAMENT.
Play in progress at Remuera. Inset is a portrait of Mrs. Davey, the singles champion, who is defending her title.