



Papatoetoe Croquet Club

The Papatoetoe Croquet Club was linked to its parent body, the Papatoetoe Bowling Club for 49 years. We believe croquet lawns were set up to entertain bowlers' wives.

September 13th, 1913 a Management Committee was formed and this prepared the way for the first games. One year later, 31st October 1914 the lawns were opened for play and the club had 83 members including 11 Honorary Members. Gradually over the years more lawns were laid and the game was so popular in 1928 that membership has to be limited to 60 members. There was a membership waiting list of 9 in 1946. In 1957, the club moved to its present site in Sutton Crescent. With 6 lawns and a fine pavilion, membership grew until Papatoetoe had the second largest membership in Auckland and was the only North Island club with so many lawns on one level.

Until 1963 the bowling and croquet clubs worked together in raising funds. In 1963 it was agreed to allow the croquet club to manage its own affairs and the Croquet Club became a separate entity with its own constitution. A 20 year lease was obtained from the Papatoetoe City Council (later incorporated into Manukau City Council). The lease was renewed in 1983 expiring in 2003.

Some interesting anecdotes from club history:

20th December 1914 – Mrs P. wrote saying it was not convenient for her to give afternoon tea. She sent 7/6 (75 cents) donation instead. This was returned and it was explained to Mrs P that she must provide the tea and send someone in her place.

10th February 1923 – it was necessary to call a meeting to decide what steps could be taken with regard to the disgraceful conduct of Mrs F and her continued attacks against the committee. After several meetings and threatened legal proceedings a resolution was put to a meeting on 9th June 1923 that as Mrs F. would not apologise the club would call upon her to resign, and failing that her name would be removed from membership.

Throughout two World Wars, Papatoetoe Club did much patriotic work, fund raising, entertaining wounded soldiers and sending food parcels to England. Later the club also sent aid to victims of the Napier earthquake and the 1919 Influenza victims. With the excellent facilities available Papatoetoe club has been the venue for many major tournaments, both national and international.

Curtain closes on croquet club (March 2005)

After 92 years the Papatoetoe Croquet Club is calling it quits due to its dwindling membership, writes Sharn Delikan

They're hanging up the mallets and hoops and counting down to the last triple ped. After almost a century Papatoetoe Croquet Club members are about to play their last matches.

The club was established at Kingswood Park Reserve in 1913 by the men of the nearby bowling club as a pastime for their wives and after notching up 90 seasons, seemed to have stood the test of time.

But decreased interest in croquet and dwindling membership made members face up to the fact that the Club had run its course. The current membership of 15 is a far cry from the 38 who turned out in their whites when the club started.

Club president Ngare Christie says "It's no longer a flourishing game. I think croquet is too clever for its time."

It came to a point where it was impossible to justify our existence when we were getting a regular attendance of seven members playing on our six lawns.

Club captain Verna Todd who

members wasn't always the case. She remembers not too long ago when 111 entrants signed up to one of the club's tournaments

Noelene Traup, at 76 a member for 18 years says "We're sad to see the club close but the reality is that we don't have

enough members."

Operations cease on March 19. The club has resolved to return its land lease to Manukau City Council. There has been a recommendation to the local community board that the neighbouring tennis court be moved to the croquet lawns.

Past and present members are invited to attend a farewell luncheon and game of croquet on Saturday March 12. And the Papatoetoe Community Board will be sending the club a letter of thanks to acknowledge the years of service given to the sport and the community.

Membership

1939	39	1959	
1944	50	1964	55
1949	60	1969	43
1954		1974	42
1959		1979	49

and Mrs. C. B. Young, Waitangi Road,
A WOMAN'S WORLD. (New Zealand Herald, 1924-12-17)

The members of the Papatoetoe Croquet and Bowling Club held a most enjoyable "At Home" on Saturday. Representatives from the Manurewa, Papakura, Mount Wellington, Mount Hobson and Otahuhu clubs were present and keen interest was taken in both croquet and bowls. Afternoon tea was served in the pavilion, the tables being prettily decorated with blue delphiniums and carnations. The spacious balcony afforded a charming view of both the surrounding districts and the games in progress. The pleasure of the afternoon was greatly added to by the musical items rendered by the Papatoetoe Town Band.

Papatoetoe

notes from "City of the Toetoe" - A History of Papatoetoe by Bernard Gadd 1987

p47 "In 1913 the Croquet Club was founded

p53 "Towards the end of 1913 a meeting elected the first officers of the Papatoetoe Croquet Club: Mrs Sumner, president, Miss Sutton, secretary. Using lawns in the Recreation Ground*, play began in October 1914. Forty-three members meant that two sessions had to be played. Play continued during war and in 1918 the club entered its first inter-club match."

* Same area as Bowling Club, founded 1912

p93 "The Croquet Club in 1957 had to move to adjoining council-owned land to make way for new greens for the Papatoetoe Bowling Club. (NB Not Papatoetoe RSA B.C.)

p107 1960s "the croquet team which twice won the North Island championship."

p127 "In 1984 the New Zealand croquet championships were held at Papatoetoe, the national president, Raewyn Elliot, being a former Papatoetoe club president."

The New Zealand Herald

20 Feb 2005

Teenager charged with stabbing homeless man at croquet club

A 15-year-old boy appeared in the Manukau Youth Court yesterday charged with assault after an attack on a homeless man at a croquet club.

A 13-year-old was referred to police youth aid over the incident at the Papatoetoe Croquet Club at 11pm on Sunday.

The victim, aged in his 20s, was in a critical condition in Middlemore Hospital last night.

Police said he had been stabbed a number of times and assaulted.



Opening day, Papatoetoe Croquet Club, September 1914.

Identified as the opening day of the Papatoetoe Croquet Club in September 1914. The occasion may in fact be the joint opening of the Papatoetoe Bowling Club and Papatoetoe Croquet Club's pavilion and greens on the Papatoetoe Recreation Ground, Great South Road, Papatoetoe, 8 November 1913.

Creator: Unknown

Date: September 1914

Location: Papatoetoe

Medium: Black and white photograph , 10 x 15.5 cm

Manukau Research Library, PAP: IV, Footprints 2326.

Photograph reproduced by courtesy of Papatoetoe Historical Society.

To enquire about copyright or reproduction rights,



'Papatoetoe Croquet Club 75th anniversary portrait', 1988.

Group portrait of members of the Papatoetoe Croquet Club taken on the opening day of the club's 75th season, 3 September 1988. Left to right, standing: E. Wheeler, E. Kellsall, B. Ball, N. Dawe, W. Chandler, M. Campbell, B. Wallace, D. Cowell. Seated: D. Magrath (Treasurer), M. Anstiss (Secretary), M. Paul (President), V. Campbell (Captain), E. Schnackenberg (Past President).



Croquet players, Papatoetoe, 1980.

Creator: Unknown

Date: February 1980



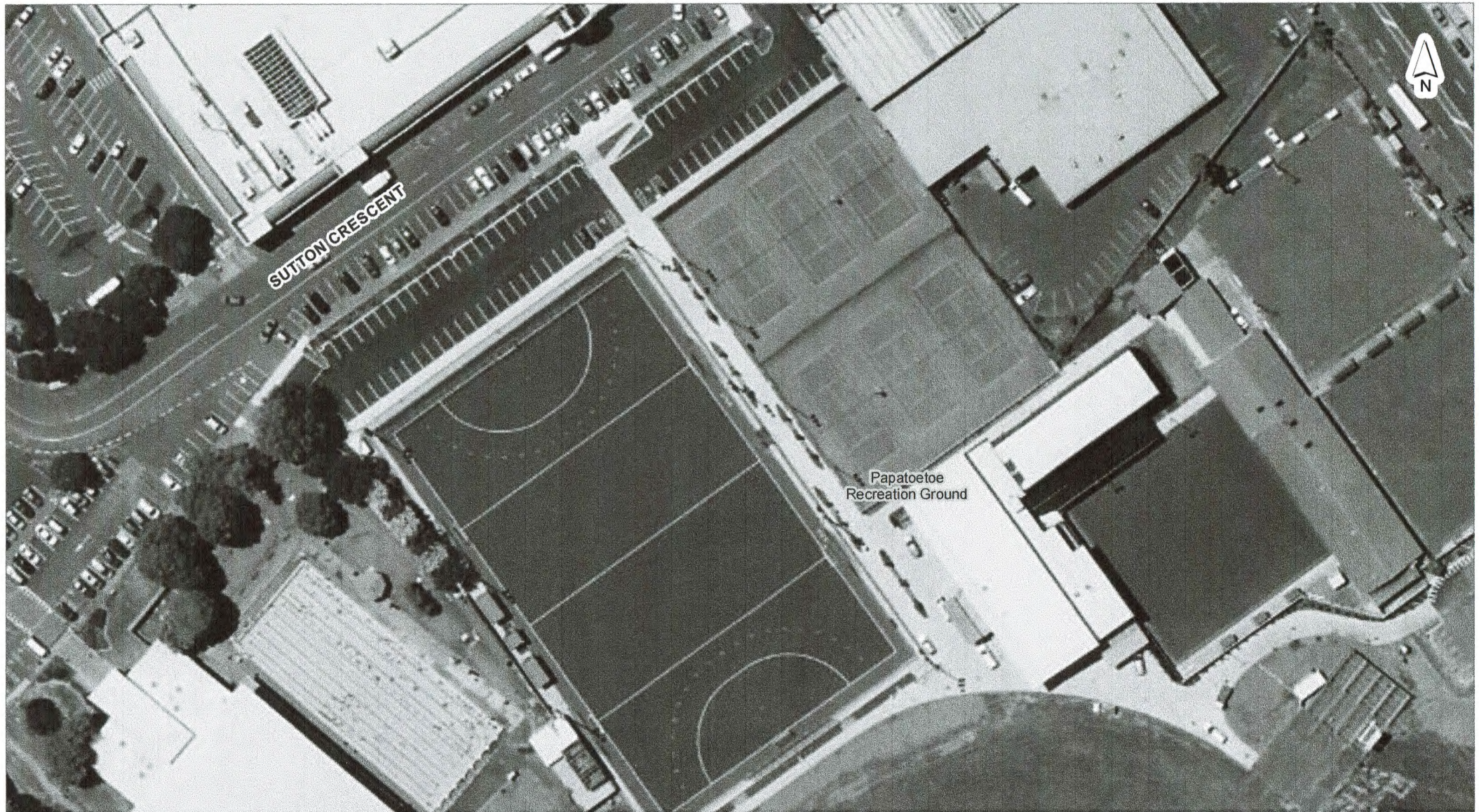
DISCLAIMER:
 This map/plan is illustrative only and all information should be independently verified on site before taking any action.
 Copyright Auckland Council. Land Parcel Boundary information from LINZ (Crown Copyright Reserved). Whilst due care has been taken, Auckland Council gives no warranty as to the accuracy and plan completeness of any information on this map/plan and accepts no liability for any error/omission or use of the information. Height datum: Auckland 1946.

Papatoetoe CC 1959 (BC to right)

0 6.5 13 19.5
 Meters

Scale @ A4
 = 1:1,000

Date Printed:
 28/12/2016



DISCLAIMER:
This map/plan is illustrative only and all information should be independently verified on site before taking any action.
Copyright Auckland Council. Land Parcel Boundary Information from LINZ (Crown Copyright Reserved). Whilst due care has been taken, Auckland Council gives no warranty as to the accuracy and plan completeness of any information on this map/plan and accepts no liability for any error, omission or use of the information. Height datum: Auckland 1946.

Papatoetoe CC 2010 (BC to right)

0 6.5 13 19.5
Meters

Scale @ A4
= 1:1,000

Date Printed:
28/12/2016

[4 of 35]

26 March 1912

The Papatoetoe Bowling Club - for men - and the Papatoetoe **Croquet** Club - for women - are formed (see also 8 November 1913).

[Related events...](#)

[Further information...](#)

[5 of 35]

8 November 1913

The Papatoetoe bowling and **croquet** clubs formally open their recently completed pavilion and greens on the Papatoetoe Recreation Ground alongside the Great South Road. The pavilion is originally single-storeyed, but a second storey is added in 1924 (see also 13 June 1972).

[Related events...](#)

[Further information...](#)

[26 of 35]

May 1957

The Papatoetoe **Croquet** Club, which has shared facilities with the Papatoetoe Bowling Club since 1913, moves to a new site in Sutton Crescent nearby. In August 1963 it formally separates from the bowling club (see also 19 March 2005).

[Related events...](#)

[Further information...](#)

[35 of 35]

19 March 2005

The Papatoetoe **Croquet** Club ceases activity more than 90 years after its foundation.

[Further information...](#)
