

Manurewa Croquet Club

On 21st June, 1921 the first of many meetings to discuss ways and means of forming a Bowling and Croquet Club was held in the Manurewa Town Hall. The Chairman of the Town Board, Mr. T. Corrin owned land in Hill Road, which with an extra piece of land was suitable and so the Bowling and Croquet Club was formed with bowling greens and one croquet lawn. The Town Board would do the drainage and water supply work. A combined meeting on 8th August, 1921 saw Messrs. Burbush and Wells appointed to confer with the Town Board to superintend works while the greens were being formed.

Sixteen members were duly enrolled, the fees being one guinea Nomination Fee, two guineas Annual Subscription for a playing member, and one guinea for an Honorary Member. The earliest cashbook dates from 1923 which shows 22 subs being paid of one pound, entry fees appearing to be five shillings.

From the early 1960's, it was becoming clear that Council would need the Hill Road land for a library and other facilities to cater for an ever increasing population. After much negotiation it was resolved and around 1977 the club moved to its present site in the Russell Road Sports Complex. It is understood that the four lawns and clubhouse were allocated to the Croquet Club in exchange for the land it owned and the land it leased. (The Bowling Club had long since separated and moved to other premises.)

Since those times, Manurewa Croquet Club has had dedicated members showing their skills not only at Interclub level but also National and International levels. The Club is proud to have Bob Jackson, 13 times New Zealand Champion, as its member. Joseph Hogan was a member of Manurewa when he won the English Open Singles in 1986 and again in 1989. Bob and Joseph also won the World Doubles Championship in the same year. It was also at Manurewa in 1997, that Bob equalled Arthur Ross's NZ Open record. Long may this tradition continue.

'Soaring Bird' A History of Manurewa
to 1965 by Ewen Wichman Manurewa
Historical Soc 2001

Manurewa Cricket Club

This club was formed in Manurewa about 1920 but had rather a mixed career until the 1950s. It was affiliated to the Franklin Cricket Association in its early days, then to City Suburban and later to Counties. It initially played matches on Jellicoe Park, then at a variety of other venues. A permanent pitch was laid at the War Memorial Park in the 1958/59 season. The official opening was celebrated by a match between the President's team and a Mayoral team led by Mr Harry Beaumont (there is no record of which team won).

Manurewa Bowling and Manurewa Croquet Clubs

The activities of the Manurewa Bowling Club and Manurewa Croquet Club were more or less intertwined, from their inaugural meetings in 1921 until notification that Council required their land was made in 1960.

The inaugural meeting of the Bowling Club took place in the Manurewa Town Hall on 21 June 1921. The Chairman was Mr T. Corin. It was noted that the Town Board owned a piece of land in Hill Road that, with the addition of another plot adequate to form a croquet green, would be suitable for the activities of the club.

Mr Corin, who was also Chairman of the Manurewa Town Board, intimated that the Town Board would be willing to form the necessary greens.

A Mr Burbush was appointed President of the new bowling club and a strong committee formed. At a combined Bowling Club and Croquet Club meeting on 8 August 1921, Messrs Burbush and Wells were appointed to confer with the Town Board to superintend the necessary work while the greens were being formed. A committee was also appointed to draw up rules. The Croquet Club, formed along similar lines soon afterwards, shows 22 subscriptions in its first cash book.



Both clubs have had dedicated members throughout the years, some having shown their expertise at inter-club, national and international levels. Many well known Manurewa residents have been either bowlers or croquet players.

Manurewa Town Board and later Manurewa Borough Council maintained the greens. During the 1940s the Borough Council undertook major work to cope with drainage problems.

In 1960 the Borough Council intimated that they had other use for the land and offered alternative venues to the clubs. The bowlers were reasonably happy with a move to Rogers Road, but the Croquet Club did not at first agree to the alternatives offered. When a suitable site was agreed on, the Croquet Club requested the formation of four full-sized lawns all sown with Mercury Bay weed, with suitable surrounds and fences. This request was never met in full.

Manurewa Masonic Lodge

The beginnings of Manurewa Lodge Number 222 go back to 1917, when a group of locals got together to discuss forming a Lodge. In 1920, Percy A. Nield, E. Thurlow Field, and eighteen others, presented a petition to form a Lodge to the Masons' Provincial Grand Master. The petition had support from Papakura Lodge Number 56 and Wairoa Lodge Number 55, and was forwarded to the Grand Master in Wellington, Thomas Ross, for final approval.

On 26 May 1921, the Lodge was formally constituted. E. Thurlow Field became the first Master. The twenty-member Lodge met in the Manurewa Picture Theatre on the Thursday nearest the full moon, which sometimes meant there were two meetings in one month. In 1928, meetings were changed to the first Thursday of each month.

Despite the difficult days of the Depression, the Lodge began planning for its own building. A suitable section on Great South Road was purchased in 1934. In April 1939 the old theatre burned down; in July, work began on a new Lodge building. Builders C. Costar and A. Stephen finished the building on the Great South Road in





Croquet players, Manurewa, 1967.

Mrs Smythe puts the ball through the hoop on the Manurewa Croquet Club's green, watched closely by another player. Mrs Smythe is one of the club's top players. This photograph was taken on Saturday 11 November 1967. Photograph published in the South Auckland Courier Central Edition, 15 November 1967, p. 22.

Creator: Unknown

Date: 11 November 1967

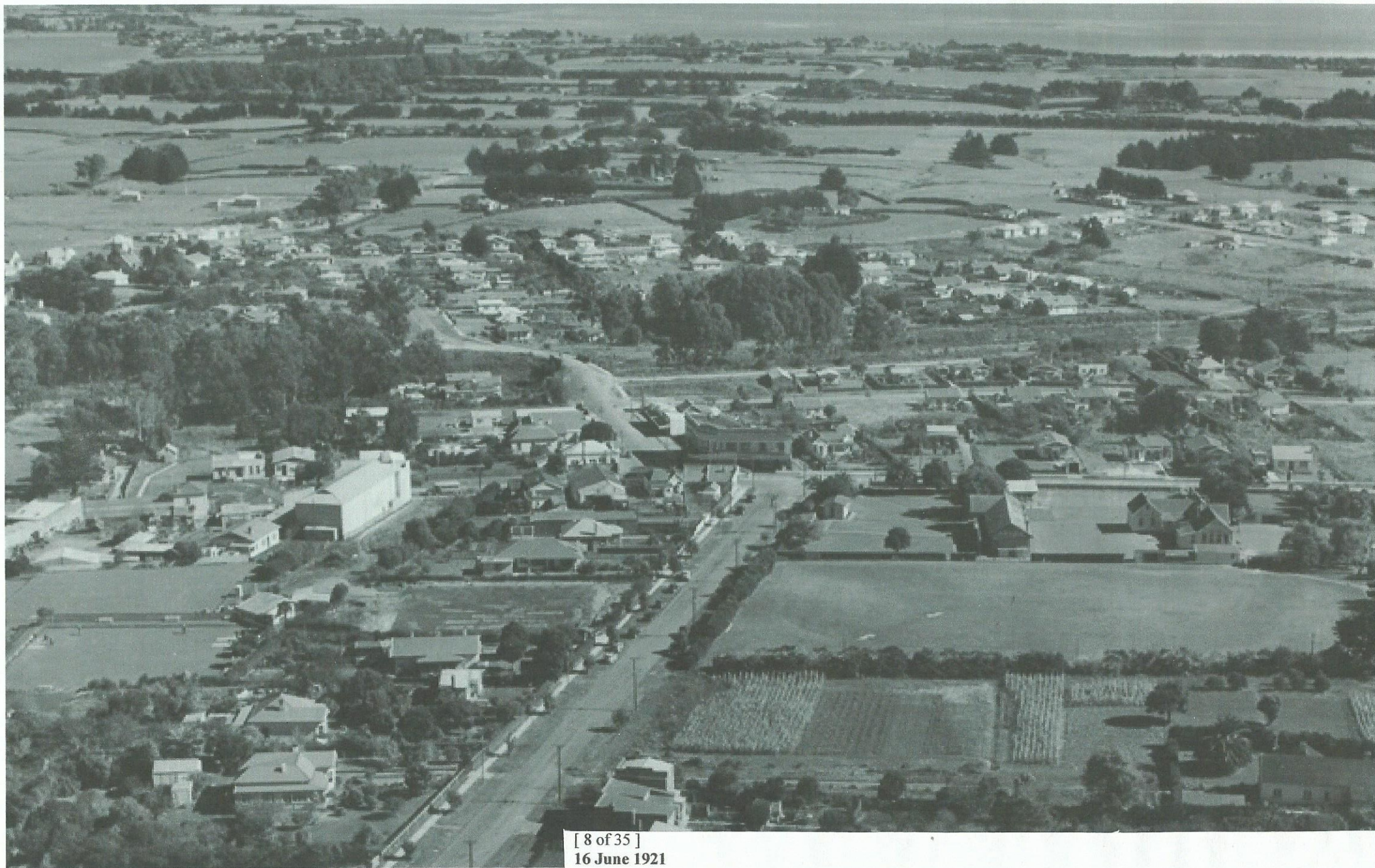
Location: Manurewa

Medium: Black and white photograph , 11 x 10 cm

South Auckland Research Centre, Courier collection, box 2. Footprints 07539.

Photograph reproduced by courtesy of Fairfax Media.

To enquire about copyright or reproduction rights, [contact the South Auckland Research Centre](#).



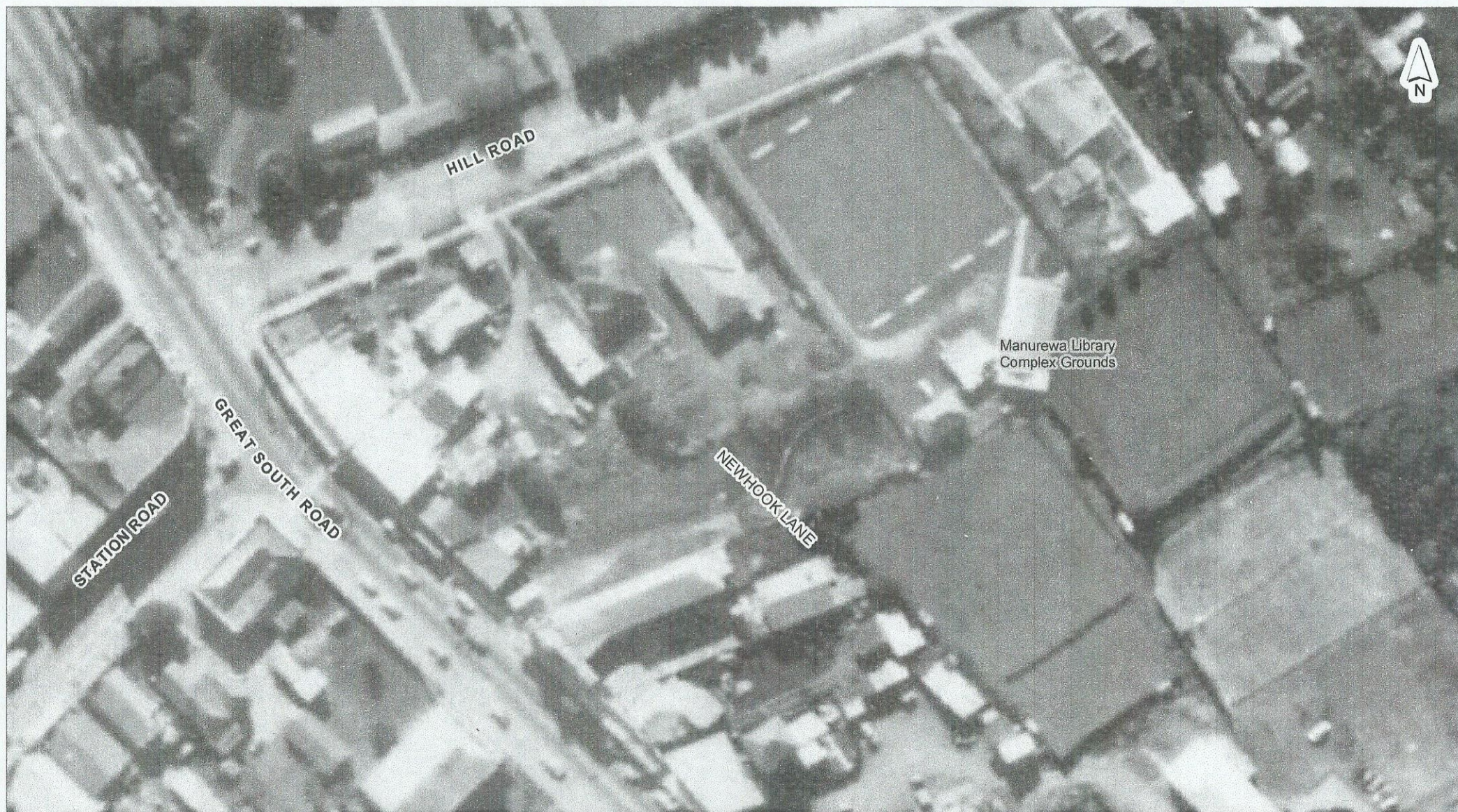
[8 of 35]

16 June 1921

<http://manukau.infospecs.co.nz/Journey/images/whites/jpg/195117ap>

The Manurewa Bowling and Croquet Club is formed. The club's greens are established on land owned by the Manurewa Town Board in Hill Road and are formally opened on 11 November 1922 (see also 25 September 1971).

Related events



DISCLAIMER:
This map/plan is illustrative only and all information should be independently verified on site before taking any action.
Copyright Auckland Council. Land Parcel Boundary Information from LINZ (Crown Copyright Reserved). Whilst due care has been taken, Auckland Council gives no warranty as to the accuracy and plan completeness of any information on this map/plan and accepts no liability for any error, omission or use of the information. Height datum: Auckland 1946.

Manurewa CC 1959

0 6.5 13 19.5
Meters

Scale @ A4
= 1:1,000

Date Printed:
27/12/2016



DISCLAIMER:
 This map/plan is illustrative only and all information should be independently verified on site before taking any action.
 Copyright Auckland Council. Land Parcel Boundary information from LINZ (Crown Copyright Reserved). Whilst due care has been taken, Auckland Council gives no warranty as to the accuracy and plan completeness of any information on this map/plan and accepts no liability for any error, omission or use of the information. Height datum: Auckland 1946.

Manurewa 2012

0 6.5 13 19.5
 Meters

Scale @ A4
 = 1:1,000

Date Printed:
 27/12/2016



Maintenance