

1939-40

AUCKLAND ASSOCIATION.

(Total Membership 1048).

AUCKLAND (20)—Mrs. J. Hollis, 15 Mount St., Auckland, C.I.
AUCKLAND TRANSPORT (7)—Mrs. A. Farrelly, Custom Street West,
Auckland.

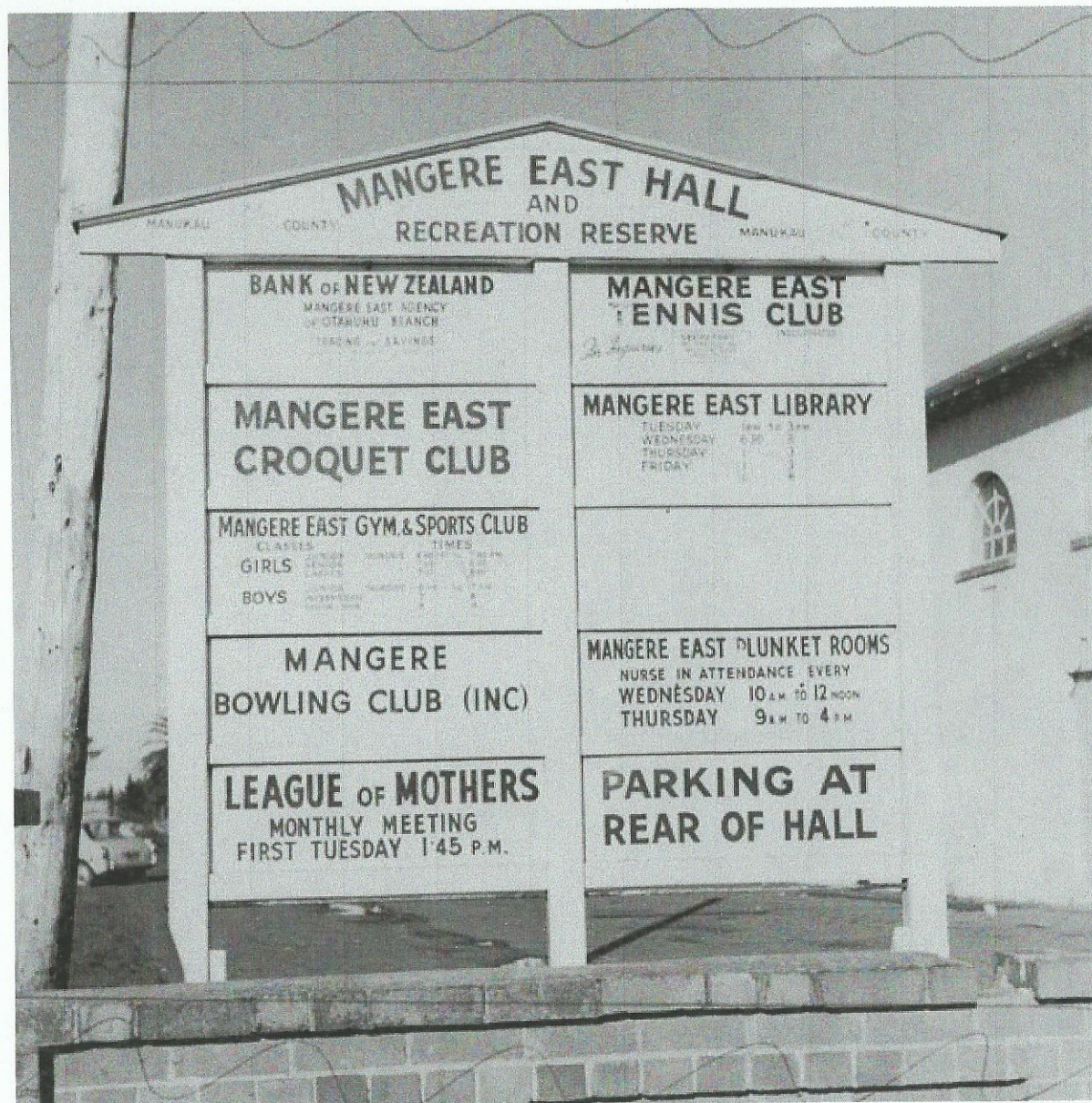
MANUREWA (25)—Mrs. A. Rutledge, Mahia Road, Manurewa.

* Located at Westney Rd
Possibly close to Mangere CC

' MANGERE CLUB.

Looking in capital condition, the bowling and croquet greens of the Mangere Club made a pretty picture on Saturday, when the official opening for the season took place. There was a very large attendance, both the bowling and croquet areas being fully utilised. The visitors included Mr. Jas. Pascoe, president of the Auckland Centre; Mr. Walter Massey, M.P., who was one of the players; as well as representatives from a number of city and suburban clubs.

Could be Mangere East



Mangere East C.C.
 Massey Rd. (360)
 1926 - 1969
 Adjacent bowling club

Community sign outside the Metro Theatre in Massey Road, Mangere East, June 1967. The photograph accompanied an article about public opposition to a tavern proposed for an adjacent site in Hain Park. Caption reads: "Some of the activities operated from the Metro are listed on this sign in front of the old hall." (South Auckland Courier Central Edition, 14 June 1967, p. 40)

Creator: Unknown
Date: June 1967
Location: Mangere East
Medium: Black and white photograph

CROQUET.

MANGERE EAST CLUB.

The ladies of the Mangere East Croquet Club held their official opening on Saturday in conjunction with the bowling club when there was a good attendance of members and visitors, including Mrs Hamilton, president, and Mrs. Keesing secretary of the Auckland Centre, as well as Mrs. Parker Hill, who won the champion of champions last year. Before declaring the courts open, Mrs. P. Henwood president of the club, extended a welcome to the visitors, and thanked the bowlers for their generosity in providing them with a pavilion.

Replying on behalf of the visitors, Mrs Hamilton mentioned that 63 clubs had entered for this year's inter-club competition, necessitating two sections in the E grade. This meant that 500 ladies would be playing every Tuesday, and had entailed a lot of work in getting out the draw.

The Mangere East Croquet Club held their annual at home on their greens yesterday, when there was a large attendance of visitors from all the neighbouring clubs. Three sessions of play were held, the winners being Mrs. Roberts, of Howick, with Mrs. Smytheman, of Papatoetoe, runner-up, Mrs. Nixon, of Otahuhu, and Mrs. H. Henwood, of Mangere Central, while Mrs. Pearce, of Otahuhu, won the third session with Mrs. Nixon again runner-up. A hand-worked apron donated by Mrs. Newson was won by Mrs. Johnson; a cake donated by Mrs. Massey going to Mrs. Penman.

[12 of 35]

26 January 1924

The newly formed Mangere East Tennis Club's courts are opened on the recreation area that becomes known as the S.W. House Recreation Ground, alongside the Mangere East Public Hall (see also 2 September 2001).

[Related events...](#)

[Further information...](#)

[13 of 35]

27 November 1924

A meeting is held at the Mangere East Public Hall to consider the formation of local **croquet** and bowling clubs. The Mangere East **Croquet** Club is in action with its own court on the S.W. House Recreation Ground behind the hall by or before December 1925; the Mangere Bowling Club is formed in January 1926 and soon afterwards establishes its greens in the same location.

[Related events...](#)

[Further information...](#)

[15 of 35]

19 April 1926

An auction is held of lots in the Massey family's new 'Massey Park' subdivision in Mangere East. Attractions include the regular train service, investment opportunities offered by the planned Otahuhu railway workshops, and the proximity of Manukau Harbour beaches, the Middlemore golf links, King's College and the S.W. House Recreation Ground with its

bowling, **croquet** and tennis facilities.

[Further information...](#)

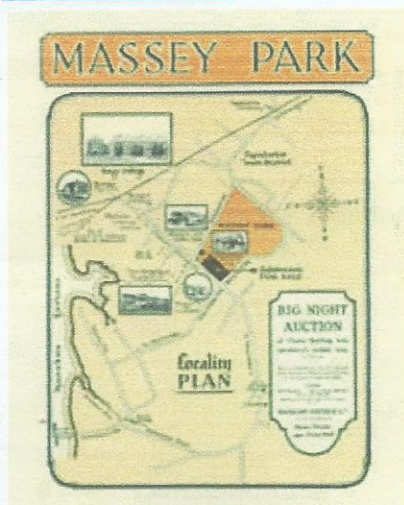


Image: Massey Park [poster], Auckland, 1926. Actual size: 54 x 44 cm., folded to 27 x 11 cm.

[Large image](#)

[24 of 35]

6 March 1950

Representatives of Manukau City Council and the East Tamaki war memorial committee meet with the Minister of Internal Affairs to discuss a proposed East Tamaki Second World War memorial. The ambitious plans for the East Tamaki recreation reserve include a memorial gateway, a garden of remembrance, a new hall, and new sports pavilions and playing fields. The plans are subsequently scaled down, although the playing fields are extended, a bowling pavilion is opened in 1953, a **croquet** pavilion in 1955, and memorial gates completed in September 1955 (see also 12 December 1967).

[Related events...](#)

[Further information...](#)

[27 of 35]

16 December 1958

Manukau County Council agrees to purchase a 14-acre plot of land from the Gee estate on the corner of Massey and Buckland Roads, Mangere East, three acres for commercial development and eleven acres for a recreational reserve. The latter portion is the first stage of what becomes known as Walter Massey Park (see also 4 November 1963).

[1 of 1]

16 December 1958

"Finality has been reached on the proposal to purchase 14 acres of land at the corner of Massey and Buckland Roads, Mangere East, from the Gee estate. Eleven acres are to be used for recreation purposes and playing fields and will be developed in conjunction with the existing bowling and croquet greens on the S.W. House recreation reserve. The remaining three acres has been purchased by the Council for development as a Civic Centre and for commercial and car parking purposes and will be complementary to the recreation reserve ...", 'Manukau County Works Outlined', South Auckland Courier, 28/1/1959, p. 5.

[29 of 35]

9 October 1971

The Mangere East **Croquet** Club holds a closing-down function. The club, which had been established in 1924, has few active members left.

[Further information...](#)

[9 of 35]

7 September 1923

The orchardist Samuel Ward House donates two acres of land in Massey Road in trust to the residents of Mangere as a recreation ground. This is named the S.W. House Recreation Ground (not to be confused with the S.W. House Recreation Park in Kirkbride Road). A tennis club is opened in the recreation ground on 6 January 1924; the Mangere East Public Hall is opened on an adjoining section on 6 September 1924; bowling and **croquet** clubs are soon afterwards also established (see also 27 November 1924).

[Related events...](#)

[Further information...](#)



This map/plan is illustrative only and all information should be independently verified on site before taking any action. Copyright Auckland Council. Boundary information from LINZ (Crown Copyright Reserved). Whilst due care has been taken, Auckland Council gives no warranty as to the accuracy and completeness of any information on this map/plan and accepts no liability for any error, omission or use of the information. Height datum: Auckland 1946.

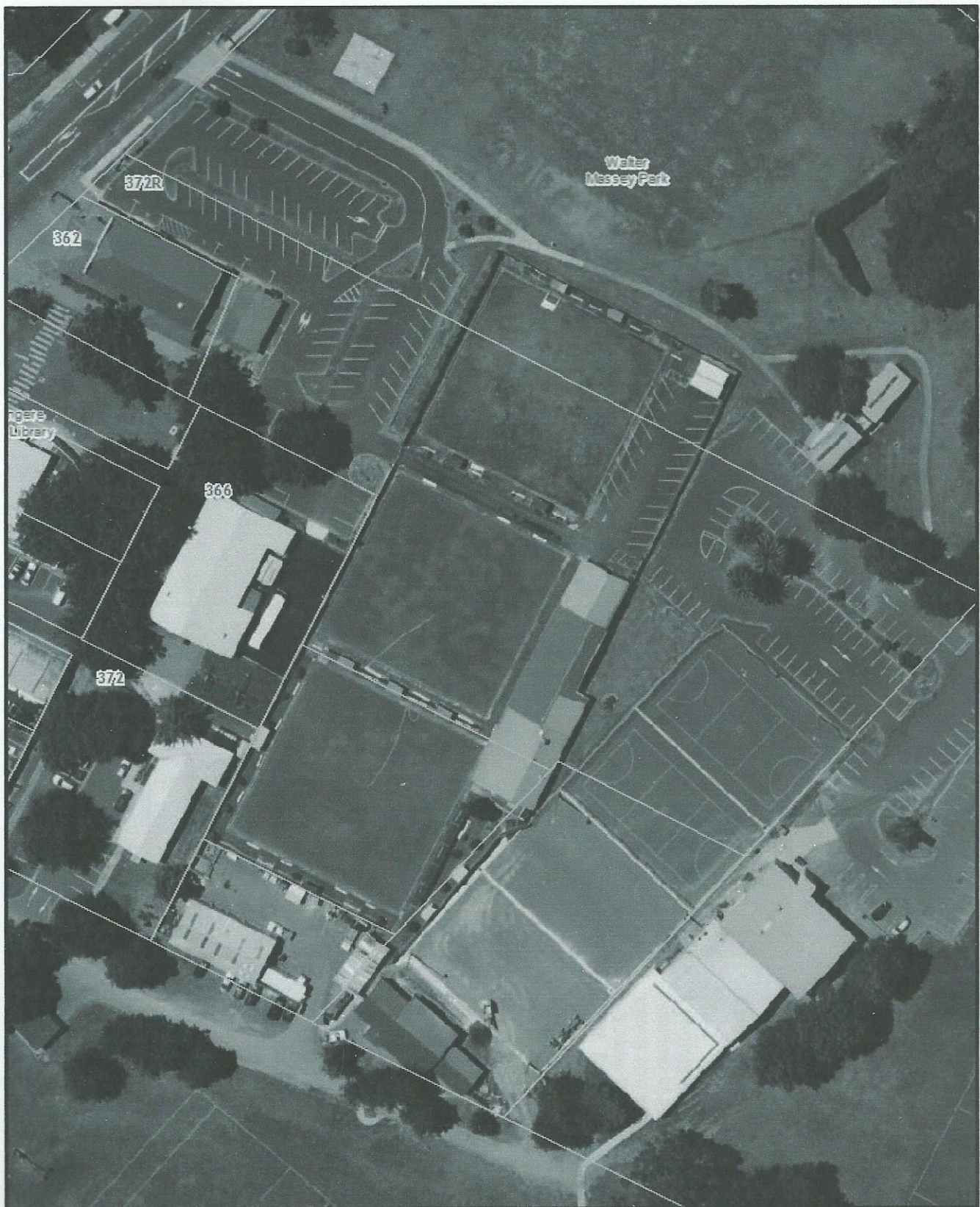
Mangere East CC 1959



**Auckland
Council**
Te Kaurihera o Tāmaki Makaurau

Created: Monday, 27 October 2014, 11:42:27 a.m.

Scale @ A4 1:1000



This map/plan is illustrative only and all information should be independently verified on site before taking any action. Copyright Auckland Council. Boundary information from LINZ (Crown Copyright Reserved). Whilst due care has been taken, Auckland Council gives no warranty as to the accuracy and completeness of any information on this map/plan and accepts no liability for any error, omission or use of the information. Height datum: Auckland 1946.

Mangere East BC 2010



Auckland Council
Te Kaitiaki o Tāmaki Makaurau

Created: Monday, 27 October 2014, 11:46:59 a.m.

Scale @ A4 1:1000