

History

Eden Epsom was founded in 1886 and the first tennis ball was served the same year that Mt Tarawera erupted.

Originally the club was a tennis and croquet club; however, over the years interest in croquet waned and in 1963 two squash courts were added. A further court was constructed a few years later.

In 1986 the club celebrated its centenary by completing a redevelopment that boasted 2 glassback squash courts, relaying the tennis courts in synthetic grass and adding floodlighting. Lounge, bar and changing-room facilities were made first class.

Eden Epsom Tennis & Squash Club has been part of the Eden Epsom community for 121 years.

Eden Epsom Tennis & Squash Club History

1886

July 26th. The first committee meeting to arrange the club formation was held in Cucksey's store, Mt Eden (now Frasers Cafe).

Land is leased from Udy's Farm and 4 Tennis courts are installed at a cost of 40 pounds.

November 30th. The 1st Season was declared open. Men were allowed to play Monday to Saturday, and Ladies Monday to Friday. No play on Sundays.

1893

Hosted NZ Tennis Championship

1896

2 Croquet Lawns were added and club became Eden Epsom Tennis and Croquet Club.

1900

2 additional tennis courts added (courts now total 6)

1909

Tennis Pavilion built for 250 pounds.

1910

Tennis courts moved 50m back from Mt Eden Rd frontage and re-laid. Hosted NZ Tennis Championships

1913

Hosted NZ Tennis Championships

1920

Inaugural Caro Bowl played at Eden Epsom

1921

Hosted Final NZ tennis Championships for the final time before they moved to the new headquarters of Auckland Tennis in Stanley Street.

Croquet was split from EE and the club renamed Eden Epsom Lawn Tennis Club.

1922

Club land bought freehold for 1,400 pounds.

1923

Ladies allowed to play on Saturdays

1926

First Motor Mower bought for 70 pounds. Horse and Mower retired

1934

Sunday play allowed between 1pm and 6pm

1939

Electricity added for water heating, lights and a new electric mower.

PAPERSPAST

[Papers Past Home](#)[Introduction](#)[Search](#)[Browse](#)[Papers Past](#) > [Auckland Star](#) > [4 October 1897](#) > [Page 2](#) > [EDEN AND EPSOM LAWN TENNIS CLUB](#)

EDEN AND EPSOM LAWN TENNIS CLUB.

Auckland Star, Volume XXVIII, Issue 230, 4 October 1897, Page 2

[► About this newspaper](#)[► View computer-generated text](#)

EDEN AND EPSOM LAWN TENNIS CLUB.

The annual meeting of the Eden and Epsom Lawn Tennis Club was held on Saturday afternoon at the lawn, Mount Eden. There was a large attendance both of ladies and gentlemen. The chair was occupied by Mr Arthur Heather, President of the Club. The report showed that the revenue for last year had increased, but the expenditure had also been greater owing to the enlargement of the ground by the addition of another court and croquet lawns. The finances of the Club are in a sound condition. The Club is taking active steps to have the courts in perfect condition for the New Zealand Tournament. The Committee's report stated that the Club players had maintained a

13 SPORTING PURSUITS

The Changing Face of Mt Eden
Mt Eden Borough Council
1989

Once Mt Eden was settled and had become more residential, the inhabitants of the borough had more leisure time. In the true English manner they began to look to sports as a means of recreation—the most respectable of sports of course, such as tennis, bowls and cricket, gentlemen's sports.

The sporting facilities in Mt Eden are left to us as a result of those who were dedicated to their sport. They sacrificed time and money to develop playing areas, so often on difficult sites, and today these grounds are still in operation, having been used now by several generations of Mt Eden residents. Over the years the sporting facilities and clubs in the area have been gathering-places for Mt Eden residents, providing both sports and social activities which have bonded people together.

Mt Eden's first two sports clubs have remained in the borough, one for over a hundred years, and the other nearing its centenary. The Tennis Club and Bowling Club were both founded near the end of last century by groups of enthusiastic residents who met and decided to form the clubs and acquire property for playing areas.



Six times N.Z. Champion, H.A. Parker, defending his Auckland Provincial Tennis Championship title at Eden-Epsom Tennis Club, 1899

Loaned by Mrs M Potter

Auckland, and its opening was reported as a major social event. The idea of croquet however, was temporarily shelved.

In those days players rode or drove in traps or gigs



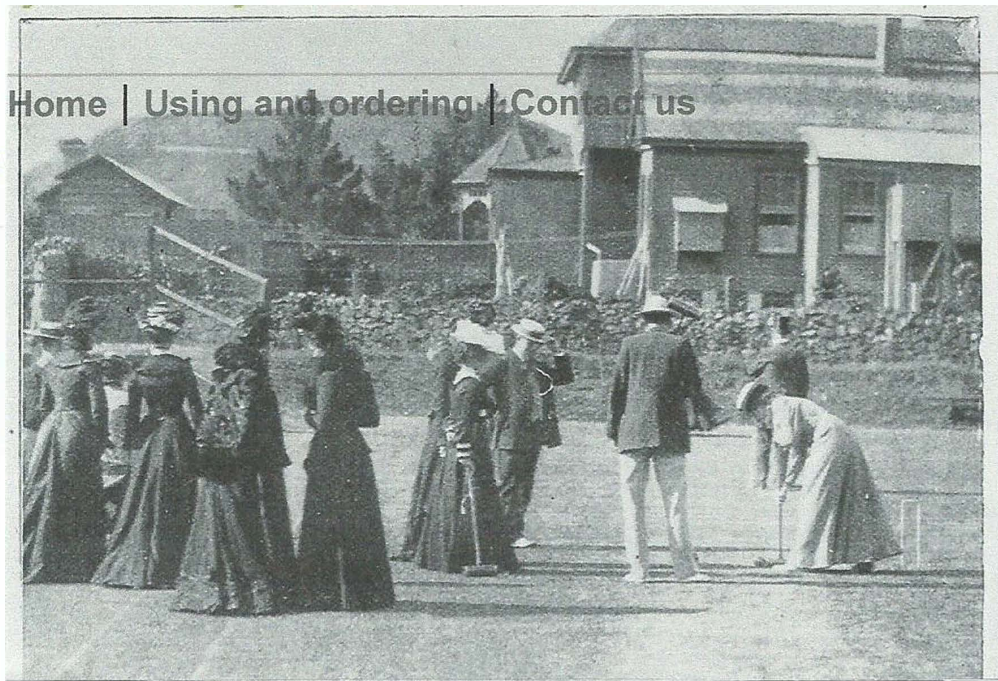
Loaned by Mrs M Potter

The Eden-Epsom Tennis & Squash Club, standing on its original site, is the oldest surviving tennis club in Auckland. It had its beginnings in 1886 when a group of residents first met in Cucksey's Store on July 6th, enthusiastic to start a combined croquet and tennis club. Mr Richard Udy offered the club the lease of a plot of land from his dairy farm at a reasonable amount. The offer was accepted, and they lost no time in forming four grass courts, opening for play in November that year. This was only the second tennis club to be formed in

to tennis and grazed their horses in Udy's paddock as they played. The grass courts were kept trim by a horse-drawn mower with the horses in leather boots so they couldn't damage the courts.

By the end of the 1880's the club was growing and numbers had to be limited to one hundred. It was by then one of the leading tennis clubs in Auckland, and New Zealand. In 1893 they staged the Auckland Lawn Tennis Association championships, and put up tents on the Udy's property to compensate for their lack of facilities.

ne1 lLave 1111ac.:
;ROQUET AT THENIOUNT EDEN AND EPSOM TENNIS CLUB'S GROUNDS: sC'JtJRDAY, NOVEMfmr 2. 1901.



[Home](#) | [Using and ordering](#) | [Contact us](#)

Record ID

AWNS-19011107-2-3

Photographer

[Auckland Weekly News](#)

Date

7 November 1901

Date Period

1900-1909

Copy Format

Digital image

Taken from the supplement to the
Auckland Weekly News 07
NOVEMBER 1901 p002

[Link for this record](#)

[# ' Add to cart \(?\)](#)

[View cart \(save list Iorder online\)](#)

[Tell us more\(?\)](#)

No comments available

been done. The courts have received a very heavy top-dressing, fully one hundred loads having been used for this purpose. The Club has now six tennis courts. An increased area has been added allowing a distance of nine feet between each court, and the old net posts have been replaced with new iron ones embedded in concrete, while the whole of the courts have been removed about two feet towards the north to alter the position of the service lines.

The Club having made arrangements with Mr Turner for a supply of water for the lawns next season, water mains have been laid with that object in view.

Last year croquet was introduced and played on No. 6 tennis court, proving such a success that the Committee have, through the generosity of Mr Udy, been enabled to form a croquet ground, 90 feet by 80, sufficient for two sets. The Committee intend next year to further enlarge the ground to allow for three sets.

The weather has been very favourable for carrying out all these improvements, and the Club will have their ground in first-class order next year. As the Club is only about twelve below its number, intending members will have to make early application for membership next season, and the same remark applies to the croquet.

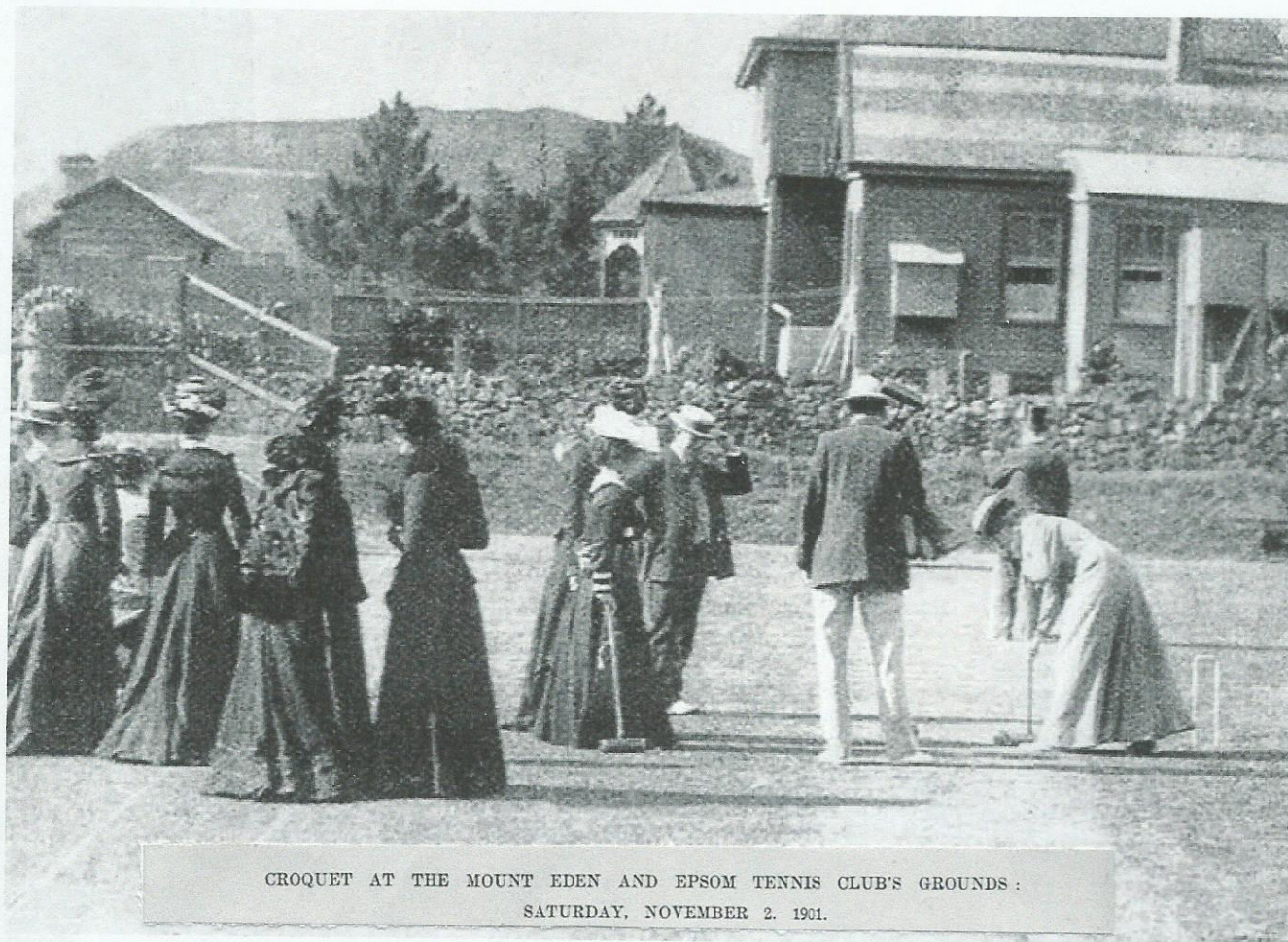
AQUATICS.

DATE: 11-11-1964

Story: Minor outdoor sports

Part of page 5 – Croquet

Croquet, 1901



This 1901 photograph shows a croquet game in progress at a tennis club's grounds. The two games are compatible – a croquet court is 32 by 25.6 metres, twice the size of a tennis court. Croquet has often been played on smaller courts, and garden croquet has been tailored to fit whatever space is available. The long-handled mallets used to hit the balls in this game are made of wood, but later in the 20th century carbon fibre and aluminium were often used. The narrow hoops used in competition are cast iron or steel, while those used for garden croquet are usually wider and made of wire.

About this item

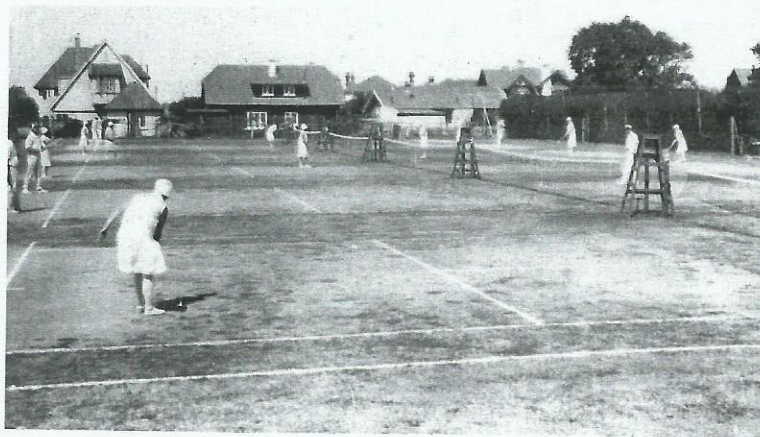
Auckland City Libraries – Tāmaki Pātaka Kōrero, Sir George Grey Special Collections
Reference: AWNS-19011107-2-3

E. & E. L. T. & C. C.		
Presented By A. ST. CLAIR BROWN, President 1914-15		
CHAMPIONSHIP SINGLES		
MEN		LADIES
H. A. PARKER	1900	Miss A. NICHOLSON
P. A. VAILE	1901	" S. RICE
J. H. TURNER	1902	" S. RICE
J. P. GROSSMAN	1903	" S. RICE
J. P. GROSSMAN	1904	" S. RICE
J. P. GROSSMAN	1905	" D. UDY
W. A. BROWN	1906	" D. UDY
J. P. GROSSMAN	1907	" G. CORRIE
J. P. GROSSMAN	1908	" D. UDY
J. P. GROSSMAN	1909	" D. UDY
H. KEITH	1910	" G. CORRIE
H. MORPETH	1911	" G. CORRIE
W. A. BROWN	1912	" G. CORRIE
W. A. BROWN	1913	" G. CORRIE
H. D. GOLDSMITH	1914	" G. CORRIE
H. E. WEBSTER	1915	" G. CORRIE
	1916	" G. CORRIE
(WAR)	1917	" G. CORRIE
	1918	" A. GRAY
E. L. BARTLEET	1919	" C. MOGINIE
E. L. BARTLEET	1920	" G. CORRIE
E. L. BARTLEET	1921	" G. CORRIE
E. L. BARTLEET	1922	" B. KNIGHT
H. E. WEBSTER	1923	" B. KNIGHT
A. C. JOHNS	1924	" B. KNIGHT
E. L. BARTLEET	1925	" B. KNIGHT
E. L. BARTLEET	1926	" B. KNIGHT
A. W. SIMS	1927	" B. KNIGHT
M. M. MORRISON	1928	" B. KNIGHT
H. C. ROWLANDS	1929	" J. E. RAMSAY
M. M. MORRISON	1930	" B. KNIGHT

Eden-Epsom Tennis and Squash Club

Venue for many local and national championships, and the home of a succession of outstanding players, this club stands amongst sport's most important and progressive.

Believed to be the second-oldest surviving tennis club in Auckland, and still on its original site, the club resulted from a meeting of twelve men at Cucksey's grocery store on 26 July 1886. One of those attending, Richard Udy, whose name is entwined with the history of both Mt Eden and Epsom, owned a dairy farm near Pencarrow Avenue and Balmoral Road, and he agreed to lease the club a small part of it between Penhryn and Mt Eden roads at a nominal rental. Very quickly, four tennis courts had been laid out, and the



An afternoon's play at the Eden-Epsom Tennis Club, 1930 G. Teal

inaugural opening day on 30 November 1886 was reported by the *New Zealand Herald* as a major social event. Play took place on Saturday afternoons for the men and weekdays for the ladies. Within two years the membership roll exceeded 100.

Ten years later croquet lawns were added, and the name croquet incorporated in the club's title, but the croquet players broke away in 1921 and joined others at the club near the top of Valley Road. Original facilities at the site were



ON THE CROQUET LAWNS.

Eden & Epsom Lawn
Tennis & Croquet Club Nov 1907